

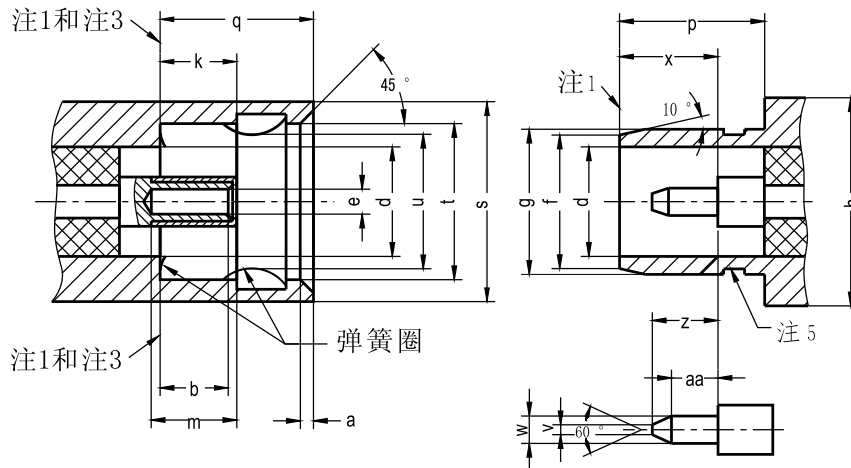
BMA系列产品是国际上这几年才发展起来的一种盲配的新型射频同轴连接器。可用于各种微波电路的连接,尤其适用于机箱、机柜的盲插合,有利于雷达等整机系统的模块化。BMA系列产品从结构尺寸上讲是SMA系列的推入式变形,接口界面采用空气界面,使用频率达到18GHz,它的优点是:体积小、接触可靠、机械电气性能优越、对接方便等。近几年来,在国内外已得到了越来越广泛的应用。

Series BMA RF Coaxial connectors are one kind of blind mating with slid on RF Coaxial connectors. developed in the international in these years, used to connect all kinds of micro-wave circuit. suitable for blindly insert of machine box and machine cup board. also used for building block system such as radar. SeriesBMA connectors are similar to SMA in structure size but with a push on design and air boundary interfoue. have the advantages of small reliable connect super electrical and mechanical performances. The products. The products are widely used in the world in these years.



主要技术特性		KEY PERFORMANCE	
温度范围 Temperature range	-65 ~ +125℃	绝缘电阻 Insulation resistance	≥5000MΩ
特性阻抗 Characteristic Impedance	50Ω	介质耐压 Dielectric Withstanding voltage	1000V
频率范围 Frequency range	0 ~ 18GHz	接触电阻 Contact resistance	中心导体 Center conductor ≤0.003Ω
电压驻波比 VSWR	≤1.15+0.012f		外导体 Outer conductor ≤0.002Ω

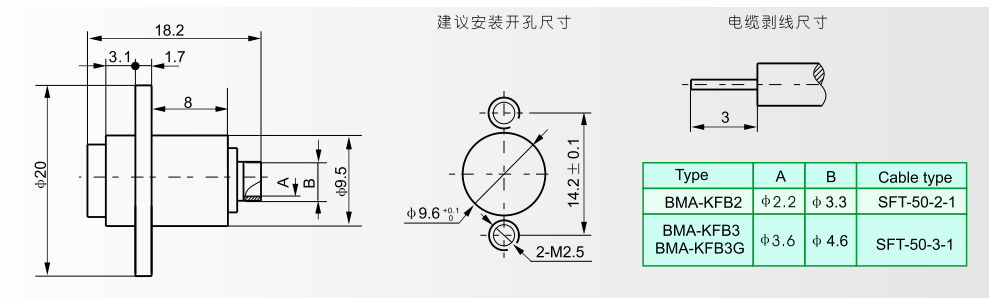
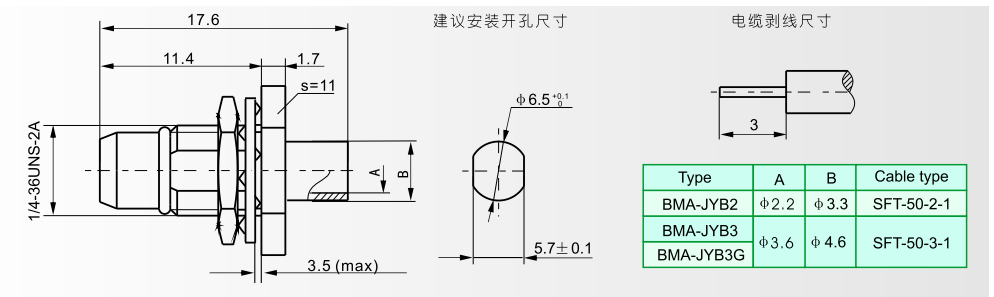
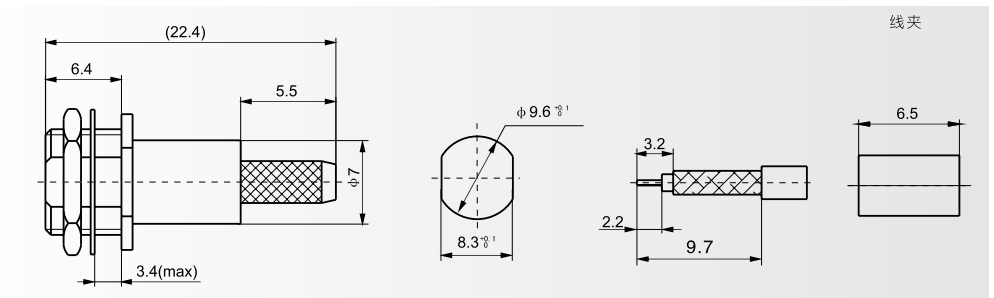
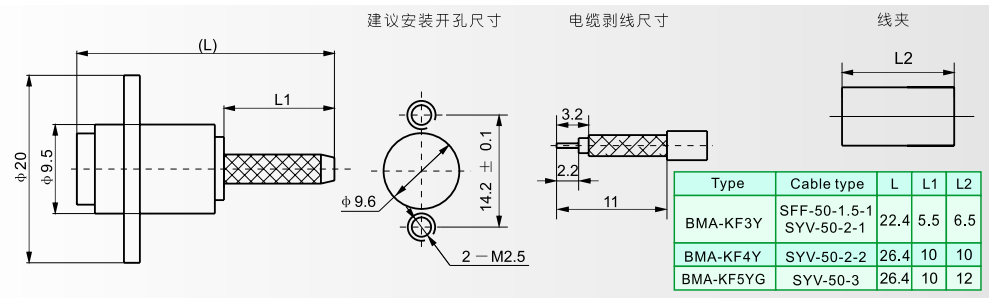
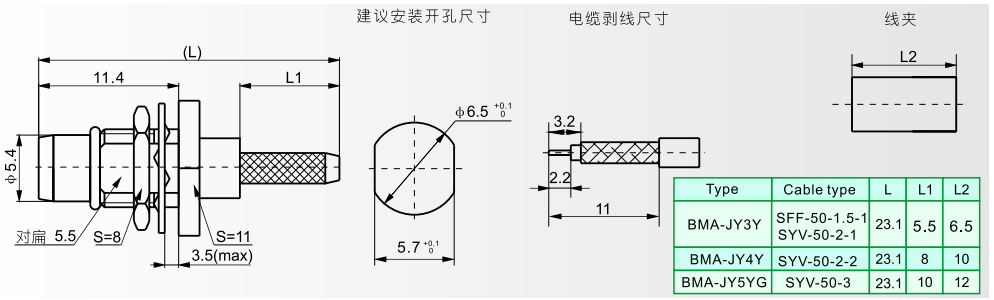
**头部配合尺寸 INTERFACE MATING DIMENSIONS**

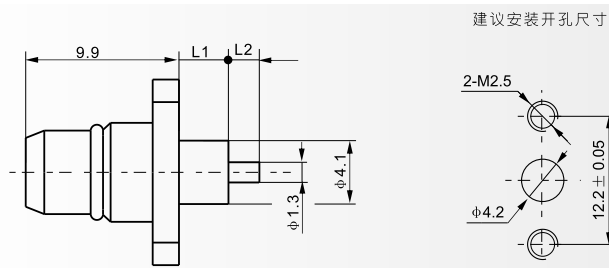
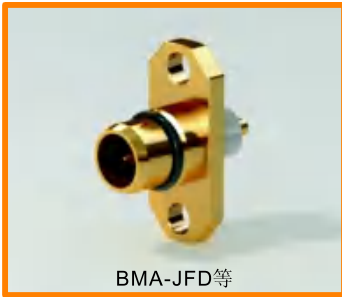


Symbol	MIN (mm)	MAX (mm)	注	Symbol	MIN (mm)	MAX (mm)	注
a	0.38	0.51	倒角	q	-	5.029	
b	2.845	-	4,6	s	Φ7.370	-	
d	Φ4.090(标称值)		直径	t	Φ5.720	-	直径
e	-	-	2 直径	u	-	-	直径
f	Φ4.880(标称值)		直径	v	-	0.380	4 直径
g	5.309	5.359	直径	w	Φ0.9017	Φ0.9398	直径
h	Φ7.620(标称值)		直径	x	3.252	3.429	直径
k	3.048	3.225	3	z	2.159	2.413	
m	2.921	-		aa	1.346	-	
p	5.055	-	-	-	-	-	

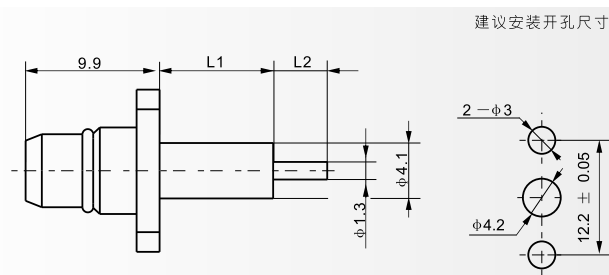
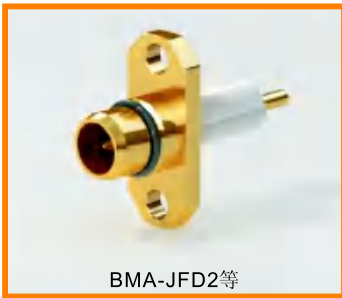
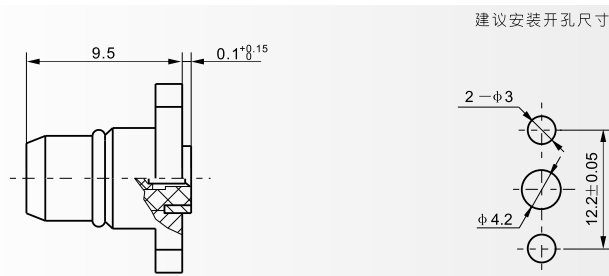
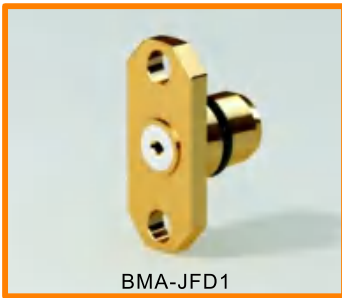
1 机械和电气基准面。  
 2 当孔径与直径为0.9017/0.9398mm(0.0355/0.0370in)的插针插合时，满足电气和机械性能要求。  
 3 到弹簧底部。  
 4 满足电气和机械性能要求。  
 5 密封件的设计及定位任意，但当界面间隙不大于0.38mm(0.015in)时，应保证能满足环境性能要求。  
 6 从基准面到电气和机械接触部位。

注:型号中尾部带G的为不锈钢外壳。

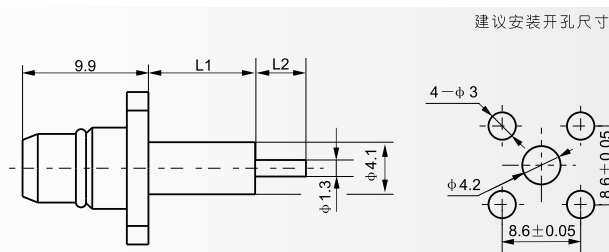
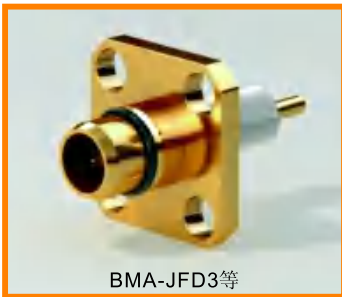




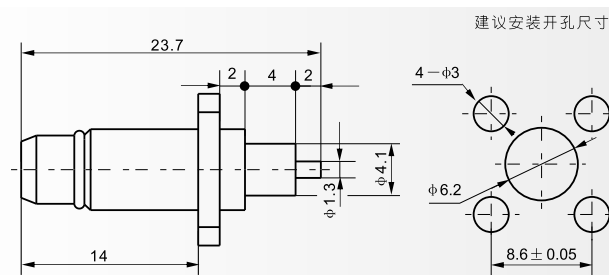
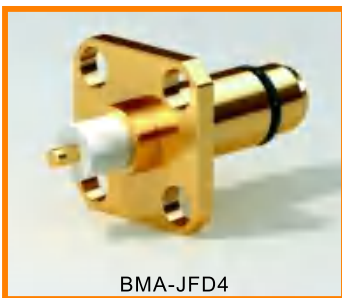
Type	L1	L2
BMA-JFD	3.2	2.0
BMA-JFDG	3.2	2.0
BMA-JFD6G	3.2	2.3

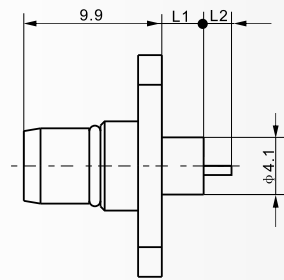
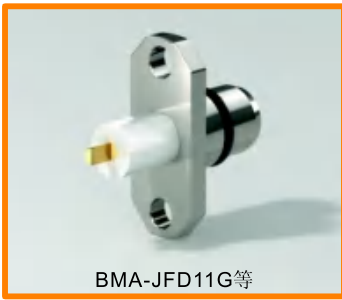


Type	L1	L2	Type	L1	L2
BMA-JFD2	8.4	4.0	BMA-JFD9G	8.4	2.0
BMA-JFD2G	8.4	4.0	BMA-JFD9	8.4	2.0
BMA-JFD5G	8.0	2.3	BMA-JFD12	4.0	3.0
BMA-JFD6	5.0	2.0	BMA-JFD13	3.0	3.0

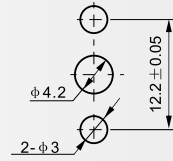


Type	L1	L2
BMA-JFD3	8.4	4.0
BMA-JFD3G	8.4	4.0
BMA-JFD8	4.0	2.0
BMA-JFD8G	4.0	2.0
BMA-JFD10	8.4	3.0

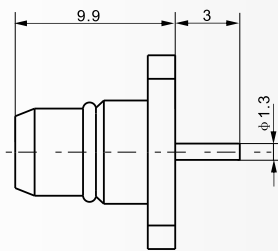
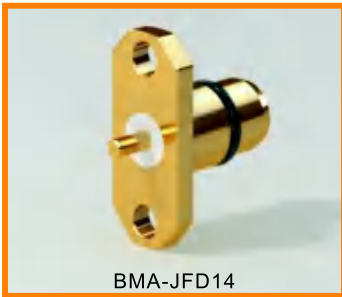




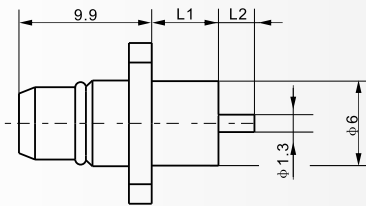
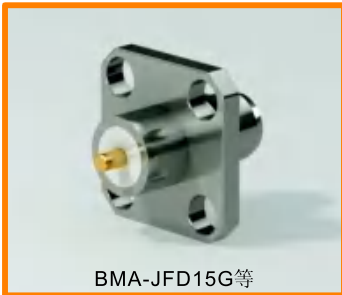
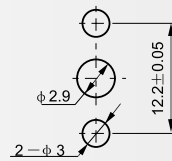
建议安装开孔尺寸



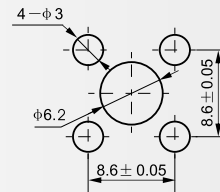
Type	L1	L2
BMA-JFD11G	5.0	2.0
BMA-JFD17	3.0	2.0
BMA-JFD17G	3.0	2.0



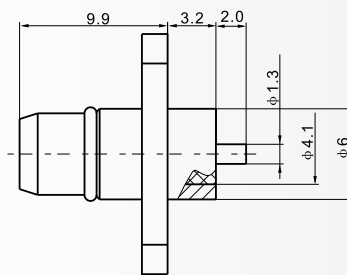
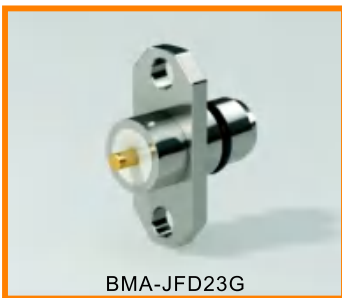
建议安装开孔尺寸



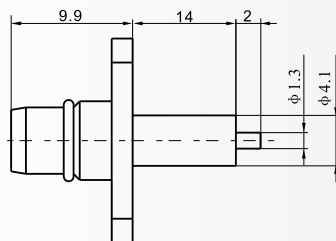
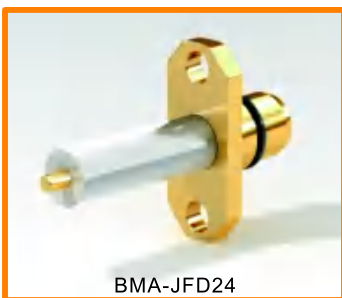
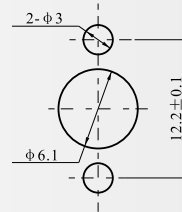
建议安装开孔尺寸



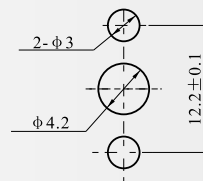
Type	L1	L2
BMA-JFD15G	4.0	2.0
BMA-JFD16G	3.2	1.5

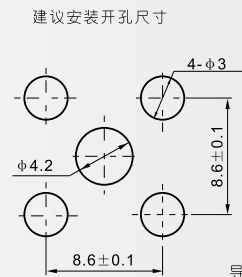
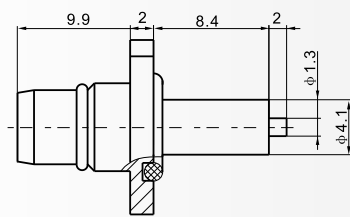
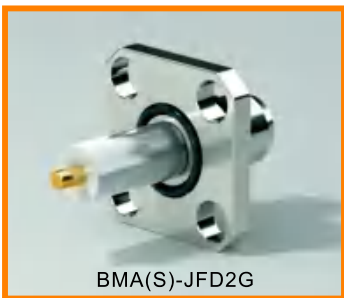
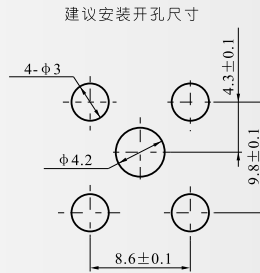
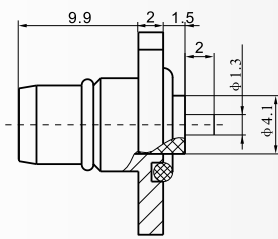
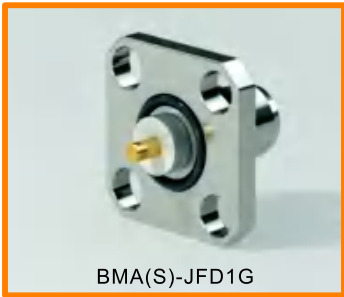
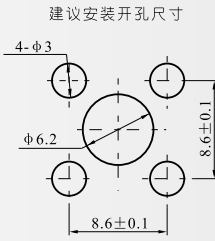
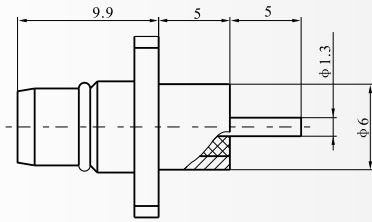
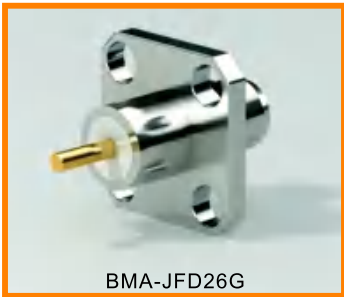
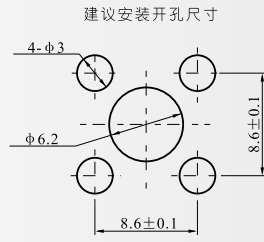
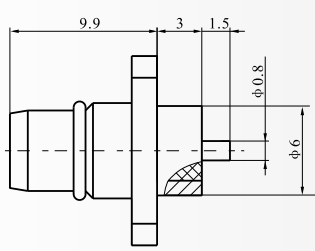
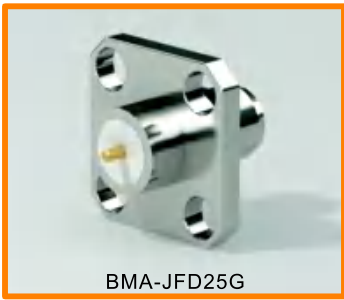


建议安装开孔尺寸

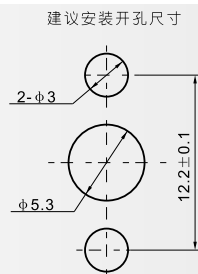
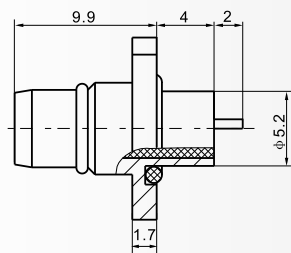
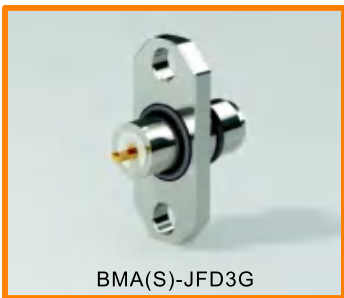


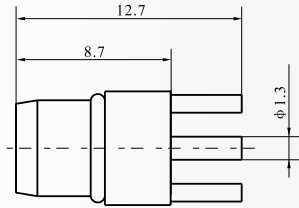
建议安装开孔尺寸



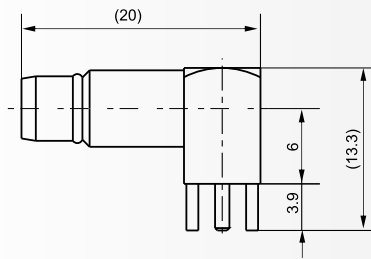
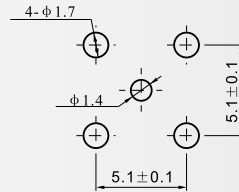


导电密封圈材料为：铝镀银硅胶

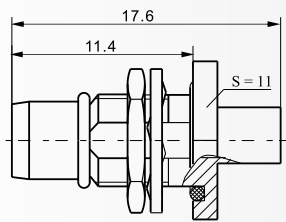
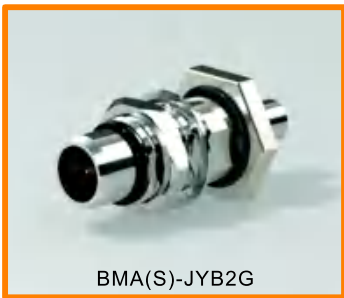
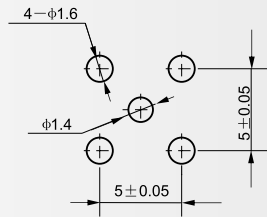




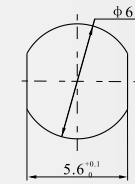
建议安装开孔尺寸



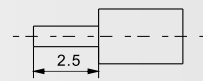
建议安装开孔尺寸



建议安装开孔尺寸

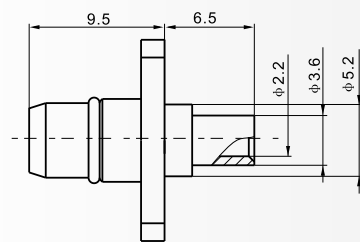
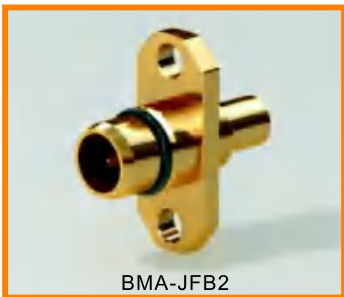


电缆剥线尺寸

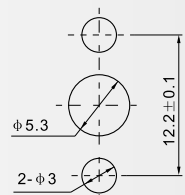


外壳为不锈钢镀镍；导电密封圈材料为：铝镀银硅橡胶

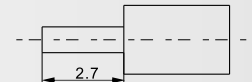
Cable type:SFT-50-2-1



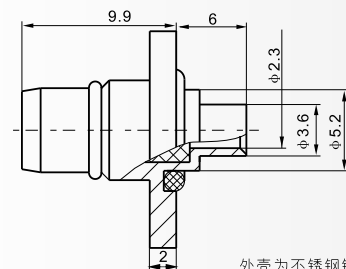
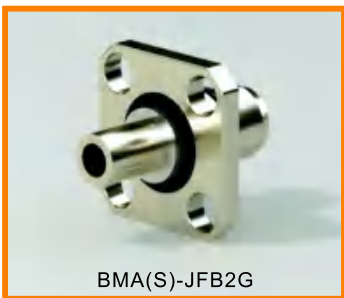
建议安装开孔尺寸



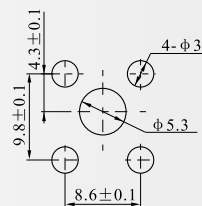
电缆剥线尺寸



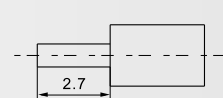
Cable type:SFT-50-2-1



建议安装开孔尺寸

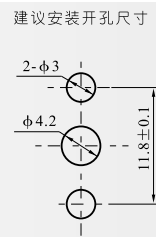
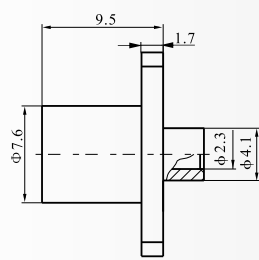
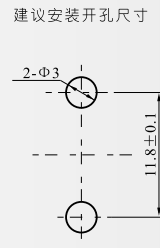
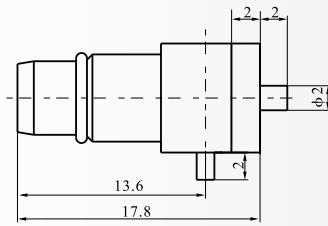
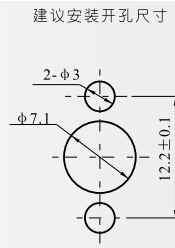
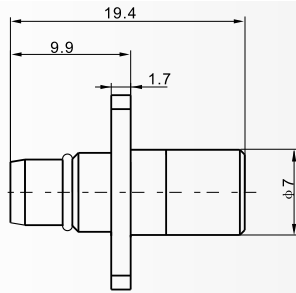
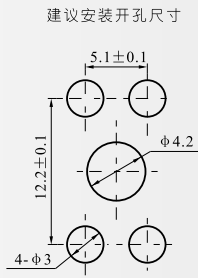
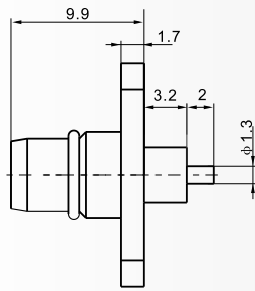
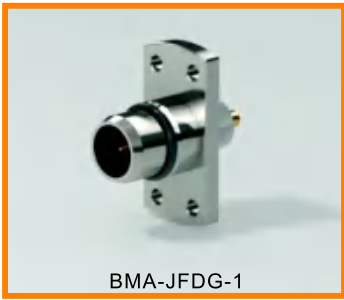


电缆剥线尺寸

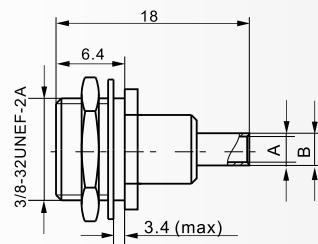


外壳为不锈钢镀镍

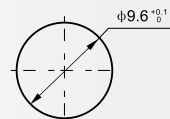
Cable type:SFT-50-2-1



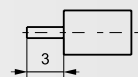
Cable type: SFT-50-2-1



建议安装开孔尺寸

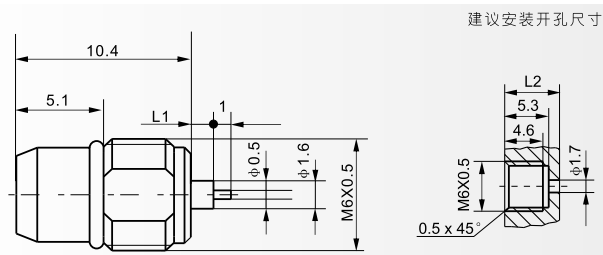
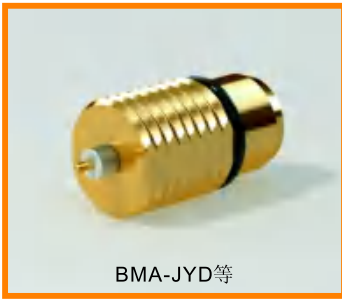


电缆剥线尺寸

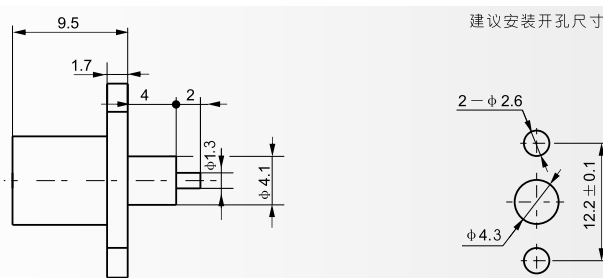
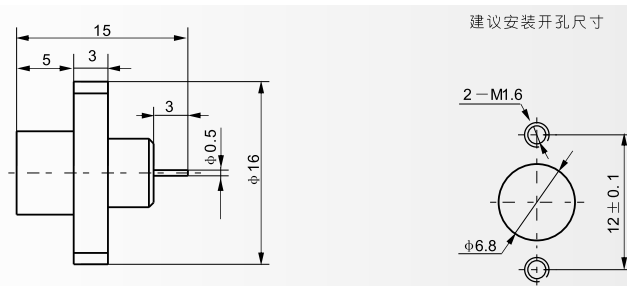
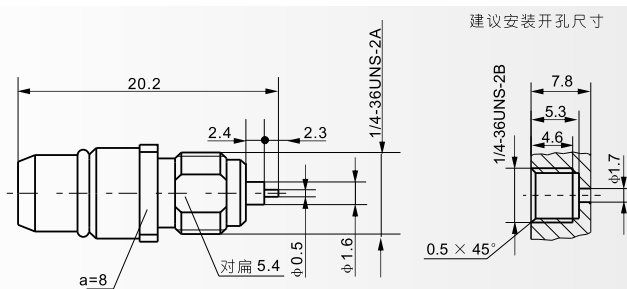
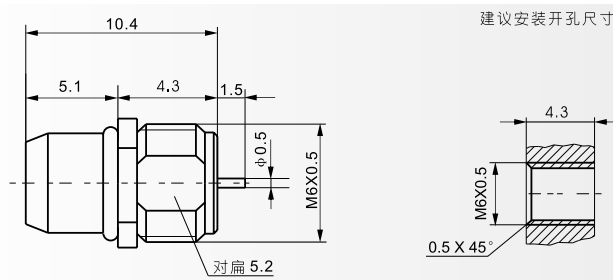


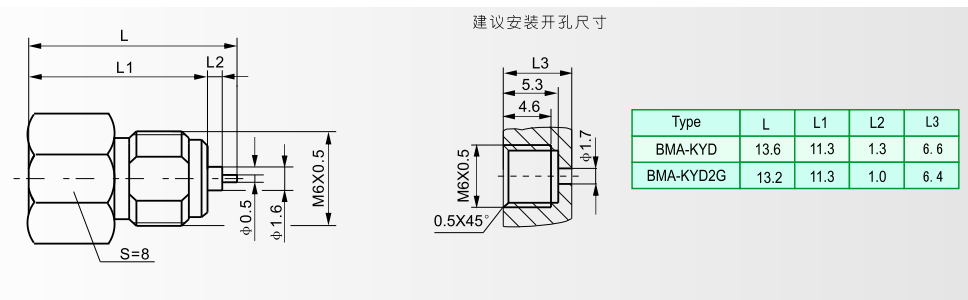
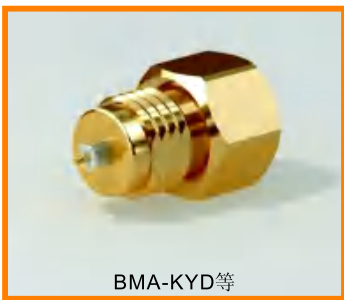
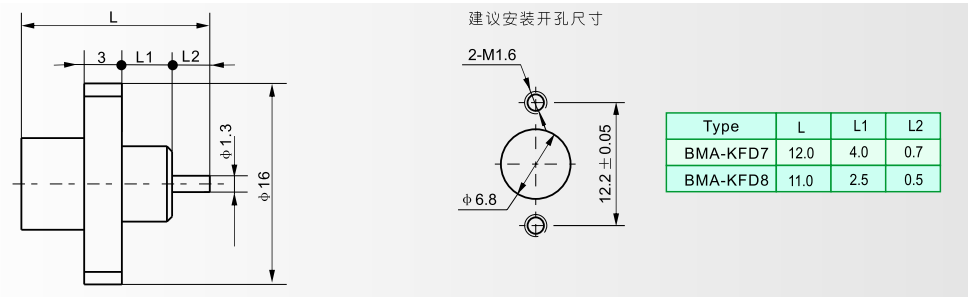
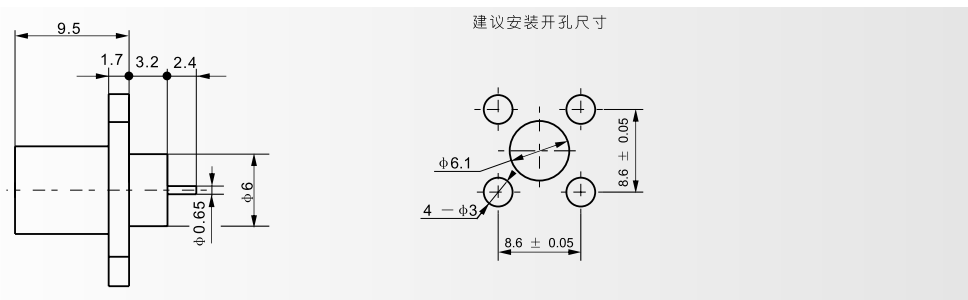
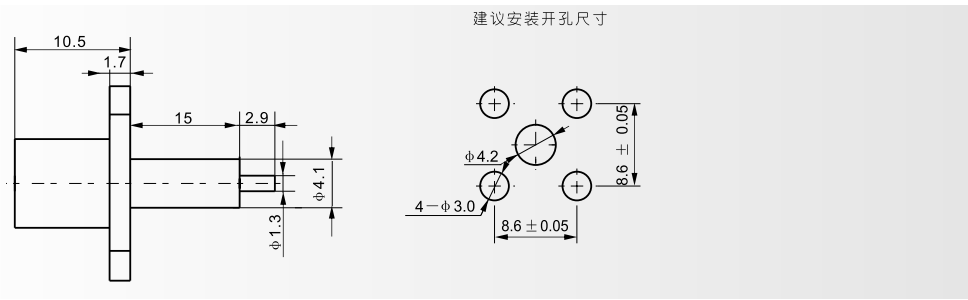
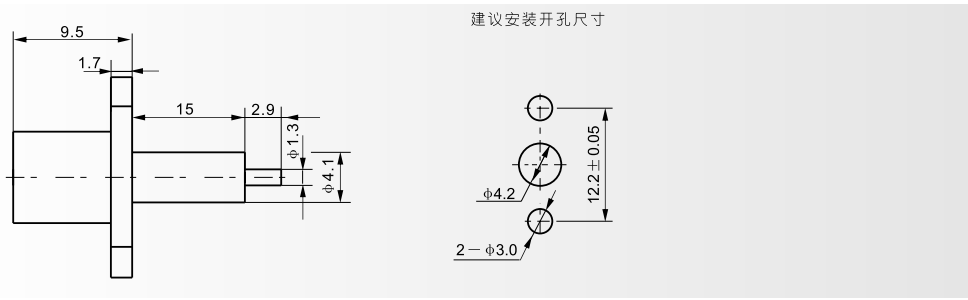
Type	A	B	Cable type
BMA-KYB2G	$\phi 2.2$	$\phi 3.3$	SFT-50-2-1
BMA-KYB3G	$\phi 3.6$	$\phi 4.6$	SFT-50-3-1

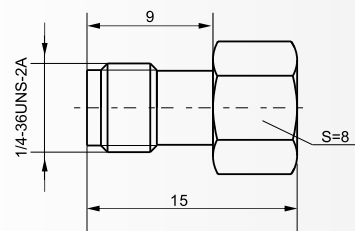
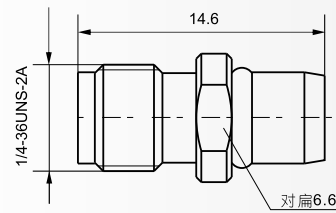
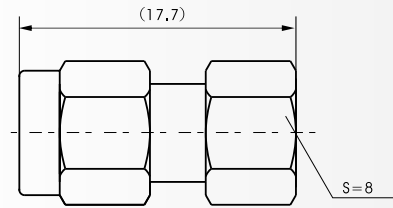
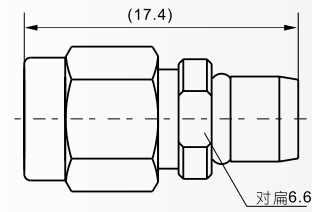
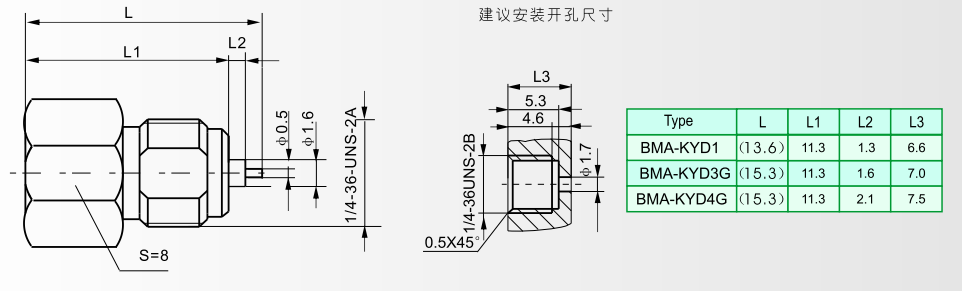


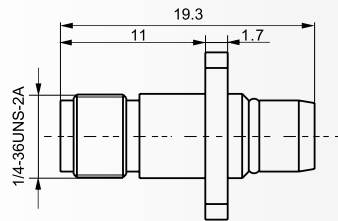


TYPE	L1	L2
BMA-JYD	1.3	6.6
BMA-JYDG	1.3	6.6
BMA-JYD2G	1.0	6.4

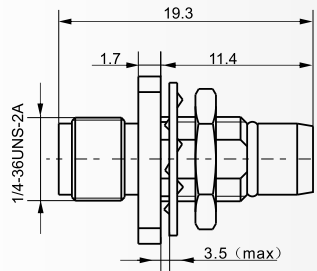
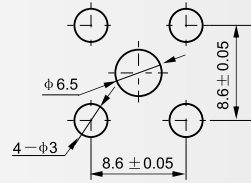




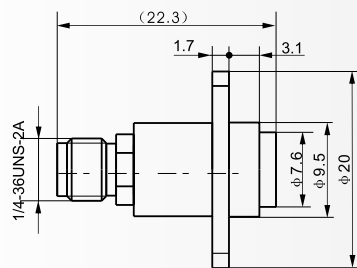
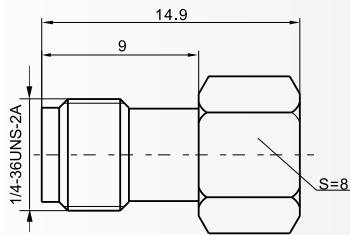
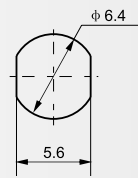




建议安装开孔尺寸



建议安装开孔尺寸



建议安装开孔尺寸

