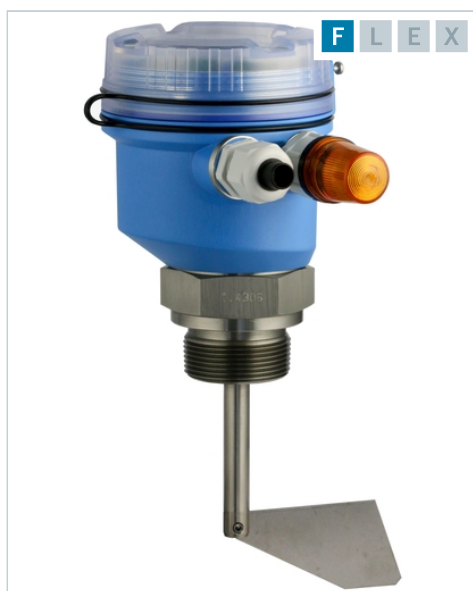


Point level switch Soliswitch FTE20 Rotary paddle switch

Simple mechanical mechanism, extremely robust and cost-effective point level switch for bulk solids



from **€178.00**

Price as of 20.02.2024

More information and current pricing:

www.endress.com/FTE20

Benefits:

- Safety comes first - Overfill prevention with an automatic rotation monitoring system
- Optical rotation control for a fast and easy check either for installation or for trouble shooting
- Extremely robust polymer housing with the latest dust Ex certification for ATEX, FM and CSA
- Cost savings over the whole life cycle:
 - Fast order process due to E-direct
 - Quick installation
 - Fast trouble shooting concept without the need of demounting
 - Best price performance ratio in the market
- Adjustment to weight of solids without the need for tools
- Housing can be rotated 360° to enable optimal alignment following installation.

Specs at a glance

- **Process temperature** -20 °C ... 80 °C (-4 °F ... 170 °F)
- **Process pressure / max. overpressure limit** 0.5 bar to 1.5 bar (7 psi ... 22 psi)
- **Min. density of medium** ≥ 80 g/l

Field of application: The economical Soliswitch FTE20 is a paddle switch for point level detection in bulk materials. Its robust polymer housing and compact design makes it an ideal sensor for full, empty and demand alarm in applications with bulk solids. The optimized polymers make the

unit outstandingly robust and therefore suitable for use in dust explosive areas according the latest standards.

Features and specifications

Point Level / Solids

Measuring principle

Paddle

Characteristic / Application

universally applicable as a full, empty and demand alarm on silos containing solids

Specialities

Rotation Monitoring System

Fold-away paddle

Supply / Communication

230 VAC 50/60 Hz

115 VAC 50/60 Hz

24 VAC 50/60 Hz

20 bis 28 VDC

Ambient temperature

-20 °C ... 60 °C (-4 °F ... 140 °F)

Process temperature

-20 °C ... 80 °C (-4 °F ... 170 °F)

Process pressure / max. overpressure limit

0.5 bar to 1.5 bar (7 psi ... 22 psi)

Min. density of medium

≥ 80 g/l

Main wetted parts

1.4305

Max. tensile strength

Rope version >1500 N

Point Level / Solids

Process connection

NPT 1 1/2", PBT
NPT 1 1/4", PBT
G 1 1/2", PBT
NPT 1 1/2", 1.4305
NPT 1 1/4", 1.4305
G 1 1/2", 1.4305

Sensor length

75 mm (3")
100 mm (4")
120 mm (4 3/4")
200 mm (8")
300 mm (12")
Rope length of approx 2000 mm (80"), can be shortened

Communication

Micro switch with changeover contact max. 10 A/250 VAC

Certificates / Approvals

ATEX II1/2D Ex ta/tb IIIC Da/Db
CSA DIP/ II, III/1/E-G
FM DIP/ II, III/1/E-G
EAC Ex ta/tb IIIC Da/Db
IECEX Ex ta/tb IIIC Da/Db
NEPSI Ex tD A20/A21
UK II1/2D Ex ta/tb IIIC Da/Db

Options

Rotation Monitoring System
Signal Lamp
Fold-away paddle
Weather protection cover

Components

HAW569 Surge arrester

More information www.endress.com/FTE20