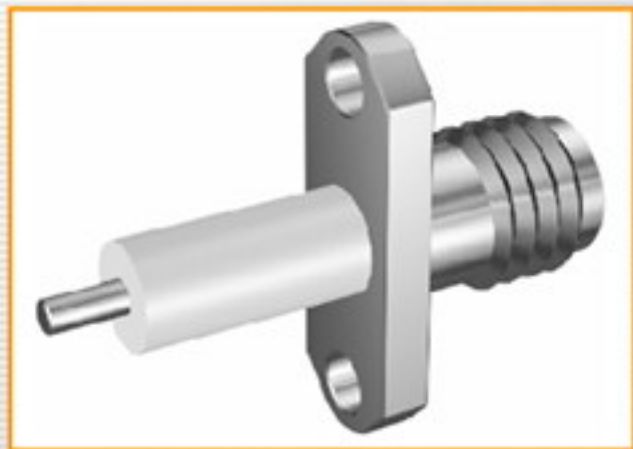
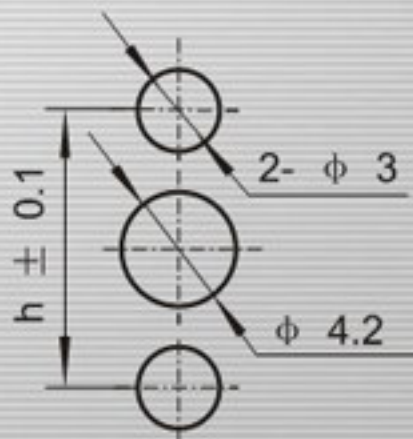
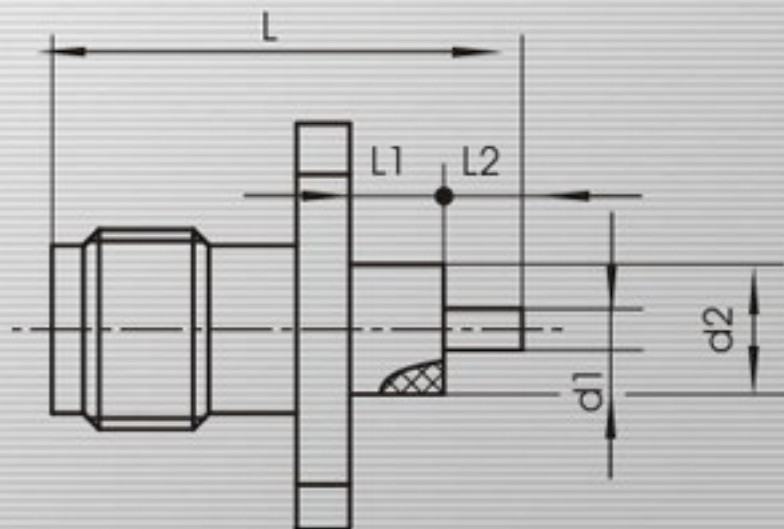


SMA-KFD102AG等



安装开孔尺寸
Mounting hole



Type	L	L1	L2	d1	d2	h
SMA-KFD102AG	17.5	5.0	3.0	Φ1.3	Φ4.1	10.2
SMA-kFD314	19.1	4.0	5.6	Φ0.7	Φ4.1	12.2
SMA-kFD315	14	3.0	1.5	Φ1.3	Φ4.1	12.2