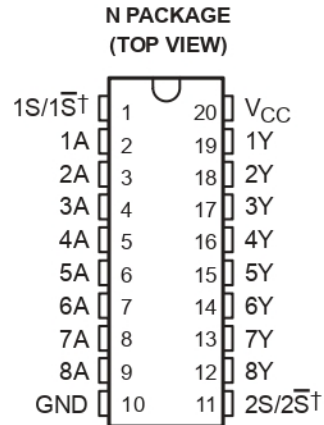


# SN75128, SN75129 EIGHT-CHANNEL LINE RECEIVERS

SLLS076B – JANUARY 1977 – REVISED MAY 1995

- Meets or Exceeds the Requirements of IBM System 360/370 Input/Output Specification
- Input Resistance . . . 7 k $\Omega$  to 20 k $\Omega$
- Output Compatible With TTL
- Schottky-Clamped Transistors
- Operates From a Single 5-V Supply
- High Speed . . . Low Propagation Delay
- Ratio Specification . . .  $t_{PLH}/t_{PHL}$
- Common Strobe for Each Group of Four Receivers
- SN75128 . . . Active-High Strobes  
SN75129 . . . Active-Low Strobes



† S and  $\bar{S}$  for SN75128 and SN75129, respectively

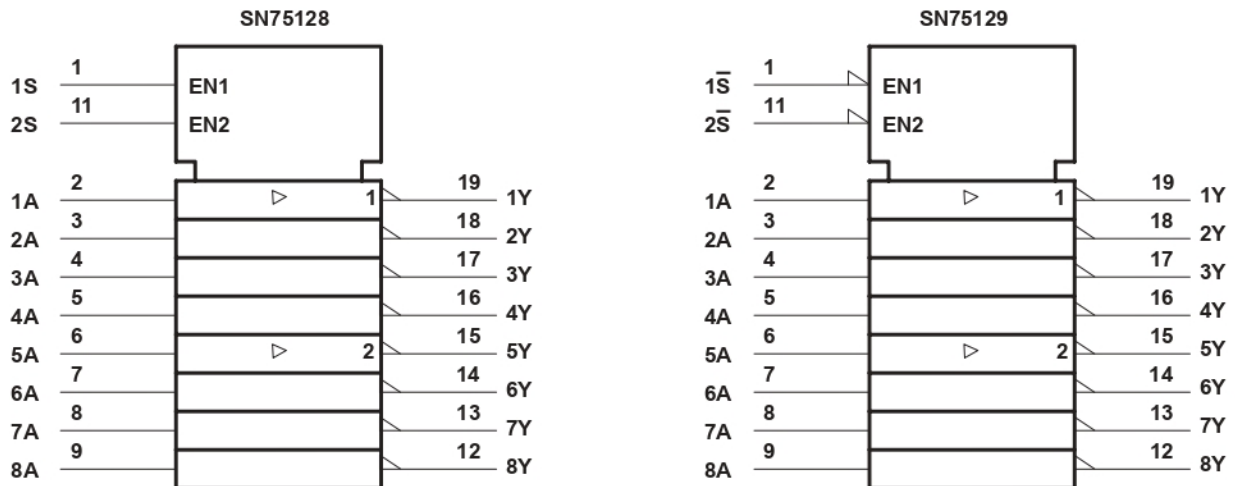
## description

The SN75128 and SN75129 are eight-channel line receivers designed to satisfy the requirements of the input-output interface specification for IBM 360/370. Both devices feature common strobes for each group of four devices. The SN75128 has active-high strobes; the SN75129 has active-low strobes. Special low-power design and Schottky-diode-clamped transistors allow low supply-current requirements while maintaining fast switching speeds and high-current TTL outputs.

For new IBM 360/370 interface designs, see the SN751730.

The SN75128 and SN75129 are characterized for operation from 0°C to 70°C.

## logic symbols†



† These symbols are in accordance with ANSI/IEEE Std 91-1984 and IEC Publication 617-12.

IBM is a trademark of International Business Machines Corp.

PRODUCTION DATA information is current as of publication date. Products conform to specifications per the terms of Texas Instruments standard warranty. Production processing does not necessarily include testing of all parameters.

**TEXAS  
INSTRUMENTS**

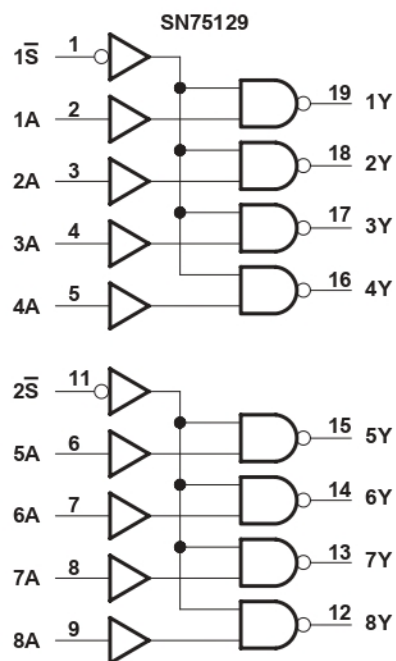
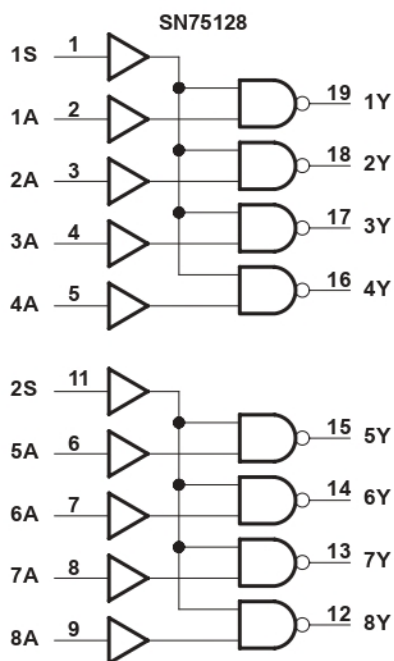
POST OFFICE BOX 655303 • DALLAS, TEXAS 75265

Copyright © 1995, Texas Instruments Incorporated

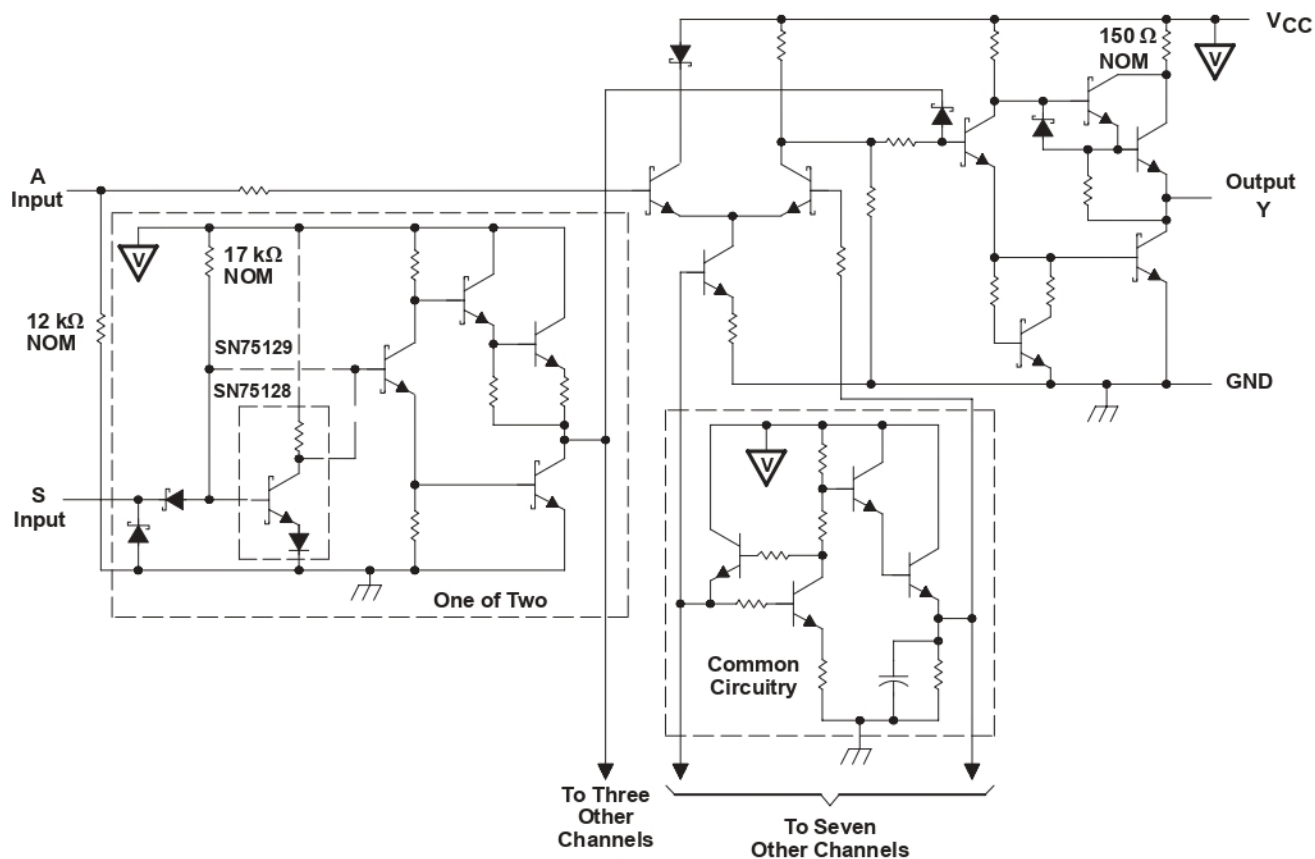
# SN75128, SN75129 EIGHT-CHANNEL LINE RECEIVERS

SLLS076B – JANUARY 1977 – REVISED MAY 1995

## logic diagrams (positive logic)



## schematic (each driver)



**absolute maximum ratings over operating free-air temperature range (unless otherwise noted)†**

Supply voltage, $V_{CC}$ (see Note 1)	7 V
Input voltage range, $V_I$ (A)	–0.15 V to 7 V
Input voltage, $V_I$ (S)	7 V
Continuous total power dissipation	See Dissipation Rating Table
Operating free-air temperature range, $T_A$	0°C to 70°C
Storage temperature range, $T_{stg}$	–65°C to 150°C
Lead temperature 1,6 mm (1/16 inch) from case for 10 seconds	260°C

† Stresses beyond those listed under “absolute maximum ratings” may cause permanent damage to the device. These are stress ratings only, and functional operation of the device at these or any other conditions beyond those indicated under “recommended operating conditions” is not implied. Exposure to absolute-maximum-rated conditions for extended periods may affect device reliability.

NOTE 1: All voltage values are with respect to network ground terminal.

**DISSIPATION RATING TABLE**

PACKAGE	$T_A \leq 25^\circ\text{C}$ POWER RATING	DERATING FACTOR ABOVE $T_A = 25^\circ\text{C}$	$T_A = 70^\circ\text{C}$ POWER RATING
N	1150 mW	9.2 mW/°C	736 mW

**recommended operating conditions**

		MIN	NOM	MAX	UNIT
Supply voltage, $V_{CC}$		4.5	5	5.5	V
High-level input voltage, $V_{IH}$	A	1.7			V
	S	2			
Low-level input voltage, $V_{IL}$	A			0.7	V
	S			0.7	
High-level output current, $I_{OH}$				–0.4	mA
Low-level output current, $I_{OL}$				16	mA
Operating free-air temperature, $T_A$		0		70	°C

**electrical characteristics over recommended operating free-air temperature range (unless otherwise noted)**

PARAMETER		TEST CONDITIONS	MIN	TYP†	MAX	UNIT
$V_{OH}$	High-level output voltage	$V_{CC} = 4.5\text{ V}$ , $V_{IL} = 0.7\text{ V}$ , $I_{OH} = -0.4\text{ mA}$	2.4	3.1		V
$V_{OL}$	Low-level output voltage	$V_{CC} = 4.5\text{ V}$ , $V_{IH} = 1.7\text{ V}$ , $I_{OL} = 16\text{ mA}$		0.4	0.5	V
$V_{IK}$	Input clamp voltage	S $V_{CC} = 4.5\text{ V}$ , $I_I = -18\text{ mA}$			–1.5	V
$I_{IH}$	High-level input current	A $V_{CC} = 5.5\text{ V}$ , $V_I = 3.11\text{ V}$		0.3	0.42	mA
		S $V_{CC} = 5.5\text{ V}$ , $V_I = 2.7\text{ V}$			20	μA
$I_{IL}$	Low-level input current	A $V_{CC} = 5.5\text{ V}$ , $V_I = 0.15\text{ V}$			30	μA
		S $V_{CC} = 5.5\text{ V}$ , $V_I = 0.4\text{ V}$			–0.4	mA
$I_{OS}$	Short-circuit output current‡	$V_{CC} = 5.5\text{ V}$ , $V_O = 0$	–18		–60	mA
$r_I$	Input resistance	$V_{CC} = 4.5\text{ V}$ , 0 V or open, $\Delta V_I = 0.15\text{ V to } 4.15\text{ V}$	7		20	kΩ
$I_{CC}$	Supply current	SN75128 $V_{CC} = 5.5\text{ V}$ , Strobe at 2.4 V, All A inputs at 0.7 V		19	31	mA
		SN75129 $V_{CC} = 5.5\text{ V}$ , Strobe at 0.4 V, All A inputs at 0.7 V		19	31	
		SN75128 $V_{CC} = 5.5\text{ V}$ , Strobe at 2.4 V, All A inputs at 4 V		32	53	
		SN75129 $V_{CC} = 5.5\text{ V}$ , Strobe at 0.4 V, All A inputs at 4 V		32	53	

† All typical values are at  $V_{CC} = 5\text{ V}$ ,  $T_A = 25^\circ\text{C}$ .

‡ Not more than one output should be shorted at a time.

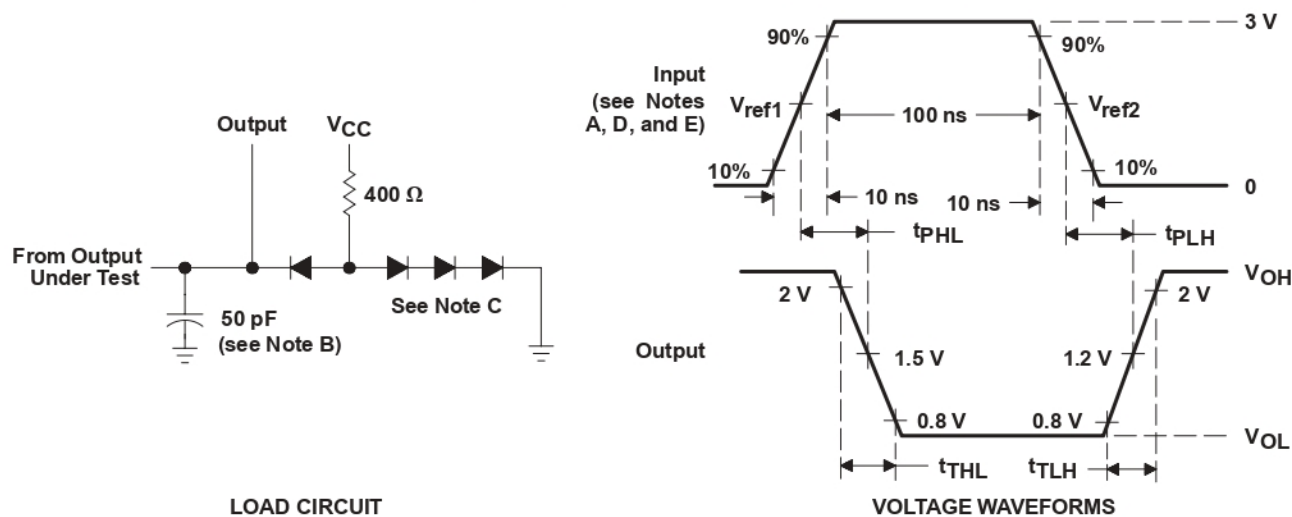
# SN75128, SN75129 EIGHT-CHANNEL LINE RECEIVERS

SLLS076B – JANUARY 1977 – REVISED MAY 1995

switching characteristics,  $V_{CC} = 5\text{ V}$ ,  $T_A = 25^\circ\text{C}$

PARAMETER		FROM	TEST CONDITIONS	SN75128			SN75129			UNIT
				MIN	TYP	MAX	MIN	TYP	MAX	
t <sub>PLH</sub>	Propagation delay time, low-to-high-level output	A	R <sub>L</sub> = 400 Ω, C <sub>L</sub> = 50 pF, See Figure 1	7	14	25	7	14	25	ns
t <sub>PHL</sub>	Propagation delay time, high-to-low-level output			10	18	30	10	18	30	ns
t <sub>PLH</sub>	Propagation delay time, low-to-high-level output	S		26	40	20	35	ns		
t <sub>PHL</sub>	Propagation delay time, high-to-low-level output			22	35	16	30	ns		
$\frac{t_{PLH}}{t_{PHL}}$	Ratio of propagation delay times	A		0.5	0.8	1.3	0.5	0.8	1.3	
t <sub>TLH</sub>	Transition time, low-to-high-level output			1	7	12	1	7	12	ns
t <sub>THL</sub>	Transition time, high-to-low-level output			1	3	12	1	3	12	ns

## PARAMETER MEASUREMENT INFORMATION



- NOTES:
- A. Input pulses are supplied by a generator having the following characteristics:  $Z_O = 50\ \Omega$ ,  $PRR \leq 5\text{ MHz}$ .
  - B. Includes probe and jig capacitance
  - C. All diodes are 1N3064 or equivalent.
  - D. The strobe inputs of SN75129 are in phase with the output.
  - E.  $V_{ref1} = 0.7\text{ V}$  and  $V_{ref2} = 1.7\text{ V}$  for testing data (A) inputs,  $V_{ref1} = V_{ref2} = 1.3\text{ V}$  for strobe inputs.

Figure 1. Load Circuit and Voltage Waveforms

## TYPICAL CHARACTERISTICS

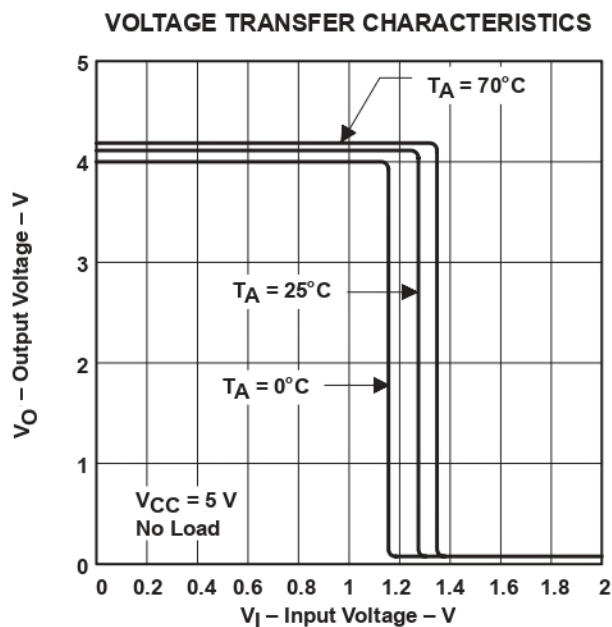


Figure 2

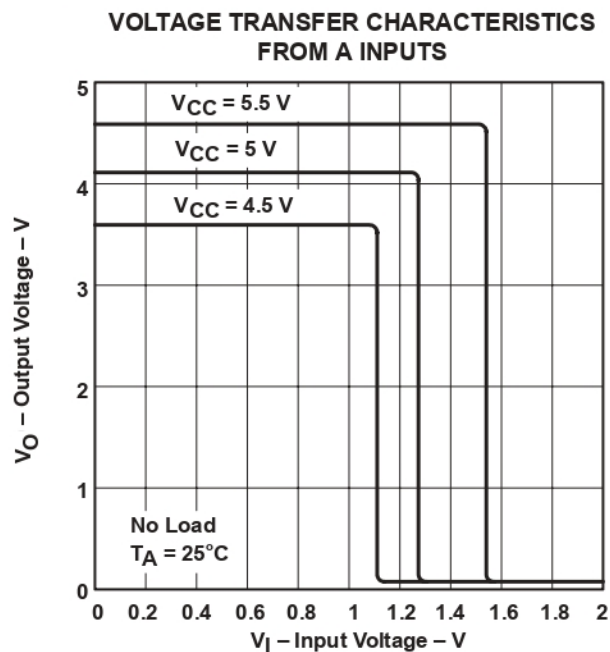


Figure 3

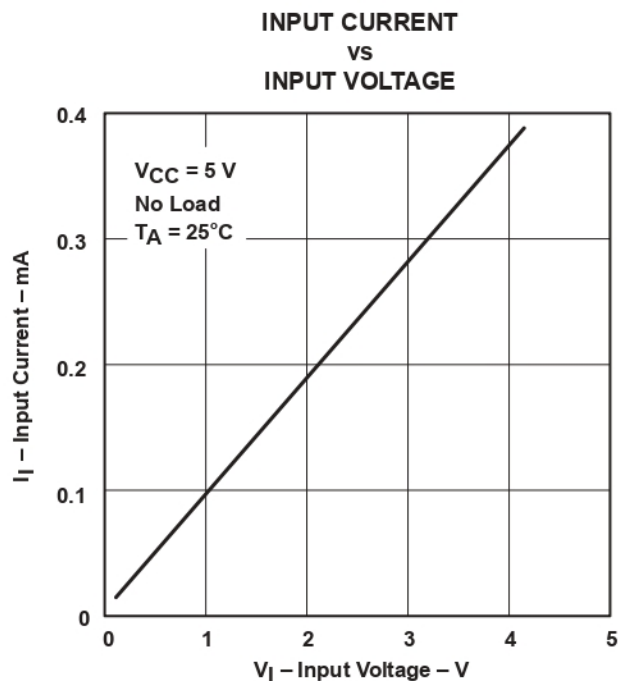


Figure 4

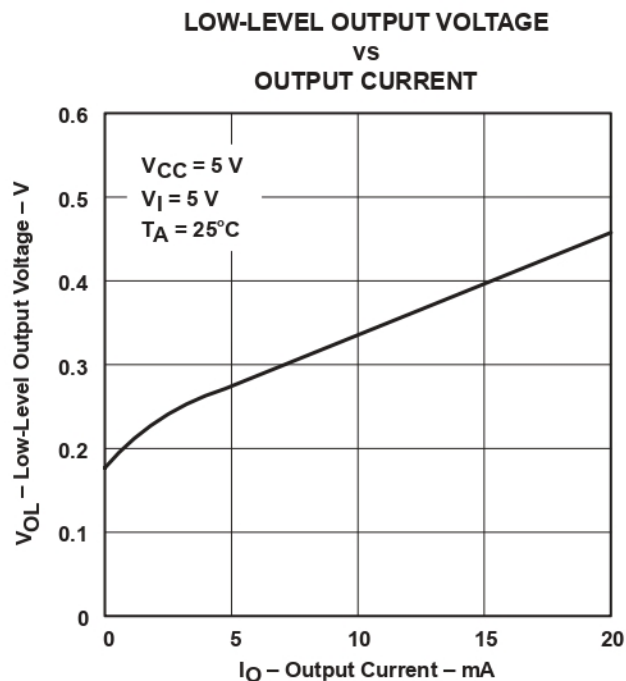


Figure 5



## PACKAGING INFORMATION

Orderable Device	Status <sup>(1)</sup>	Package Type	Package Drawing	Pins	Package Qty	Eco Plan <sup>(2)</sup>	Lead/Ball Finish	MSL Peak Temp <sup>(3)</sup>
SN75128N	OBSOLETE	PDIP	N	20		TBD	Call TI	Call TI
SN75129DW	OBSOLETE	SOIC	DW	20		TBD	Call TI	Call TI
SN75129N	OBSOLETE	PDIP	N	20		TBD	Call TI	Call TI

<sup>(1)</sup> The marketing status values are defined as follows:

**ACTIVE:** Product device recommended for new designs.

**LIFEBUY:** TI has announced that the device will be discontinued, and a lifetime-buy period is in effect.

**NRND:** Not recommended for new designs. Device is in production to support existing customers, but TI does not recommend using this part in a new design.

**PREVIEW:** Device has been announced but is not in production. Samples may or may not be available.

**OBSOLETE:** TI has discontinued the production of the device.

<sup>(2)</sup> Eco Plan - The planned eco-friendly classification: Pb-Free (RoHS) or Green (RoHS & no Sb/Br) - please check <http://www.ti.com/productcontent> for the latest availability information and additional product content details.

**TBD:** The Pb-Free/Green conversion plan has not been defined.

**Pb-Free (RoHS):** TI's terms "Lead-Free" or "Pb-Free" mean semiconductor products that are compatible with the current RoHS requirements for all 6 substances, including the requirement that lead not exceed 0.1% by weight in homogeneous materials. Where designed to be soldered at high temperatures, TI Pb-Free products are suitable for use in specified lead-free processes.

**Green (RoHS & no Sb/Br):** TI defines "Green" to mean Pb-Free (RoHS compatible), and free of Bromine (Br) and Antimony (Sb) based flame retardants (Br or Sb do not exceed 0.1% by weight in homogeneous material)

<sup>(3)</sup> MSL, Peak Temp. -- The Moisture Sensitivity Level rating according to the JEDEC industry standard classifications, and peak solder temperature.

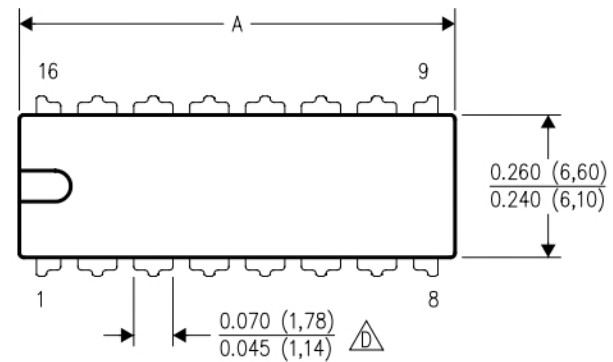
**Important Information and Disclaimer:** The information provided on this page represents TI's knowledge and belief as of the date that it is provided. TI bases its knowledge and belief on information provided by third parties, and makes no representation or warranty as to the accuracy of such information. Efforts are underway to better integrate information from third parties. TI has taken and continues to take reasonable steps to provide representative and accurate information but may not have conducted destructive testing or chemical analysis on incoming materials and chemicals. TI and TI suppliers consider certain information to be proprietary, and thus CAS numbers and other limited information may not be available for release.

In no event shall TI's liability arising out of such information exceed the total purchase price of the TI part(s) at issue in this document sold by TI to Customer on an annual basis.

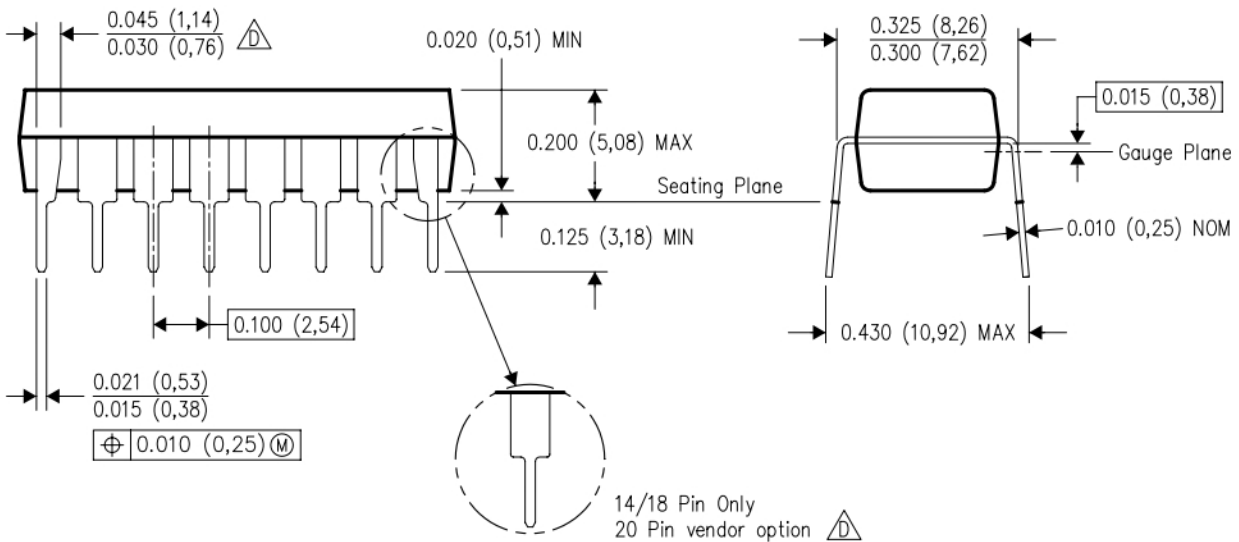
## N (R-PDIP-T\*\*)

16 PINS SHOWN

## PLASTIC DUAL-IN-LINE PACKAGE



PINS **	14	16	18	20
DIM				
A MAX	0.775 (19,69)	0.775 (19,69)	0.920 (23,37)	1.060 (26,92)
A MIN	0.745 (18,92)	0.745 (18,92)	0.850 (21,59)	0.940 (23,88)
MS-001 VARIATION	AA	BB	AC	AD

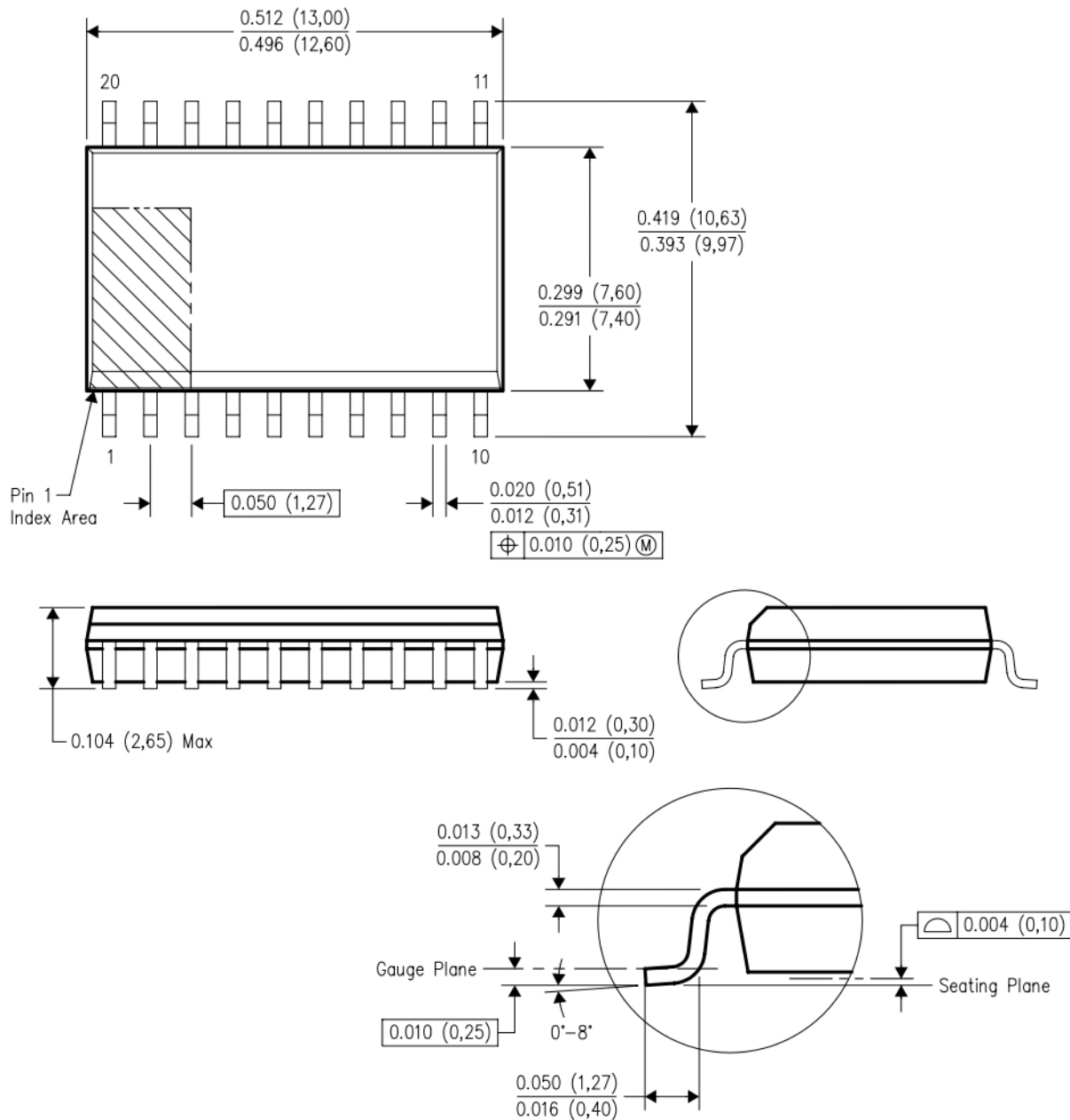


4040049/E 12/2002

- NOTES:
- A. All linear dimensions are in inches (millimeters).
  - B. This drawing is subject to change without notice.
  - Falls within JEDEC MS-001, except 18 and 20 pin minimum body length (Dim A).
  - The 20 pin end lead shoulder width is a vendor option, either half or full width.

## DW (R-PDSO-G20)

## PLASTIC SMALL-OUTLINE PACKAGE



4040000-4/F 06/2004

- NOTES:
- All linear dimensions are in inches (millimeters).
  - This drawing is subject to change without notice.
  - Body dimensions do not include mold flash or protrusion not to exceed 0.006 (0,15).
  - Falls within JEDEC MS-013 variation AC.