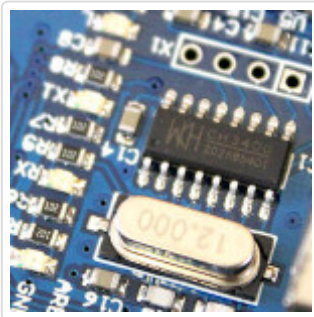

[Arduino Development](#) / [Arduino Pro Mini](#) / CH340
Windows 8 driver download



CH340 Windows 8 driver download

 Like 84



Download latest version of verified & working Windows 8.1 x64 & x86 driver for CH340, CH340G USB to Serial converter.

[CH340 driver for Windows 8.1 x64 & x86](#)

Driver details

Categories

[Arduino Pro Mini](#)

Tags

[CH340](#)

[CH340G](#)

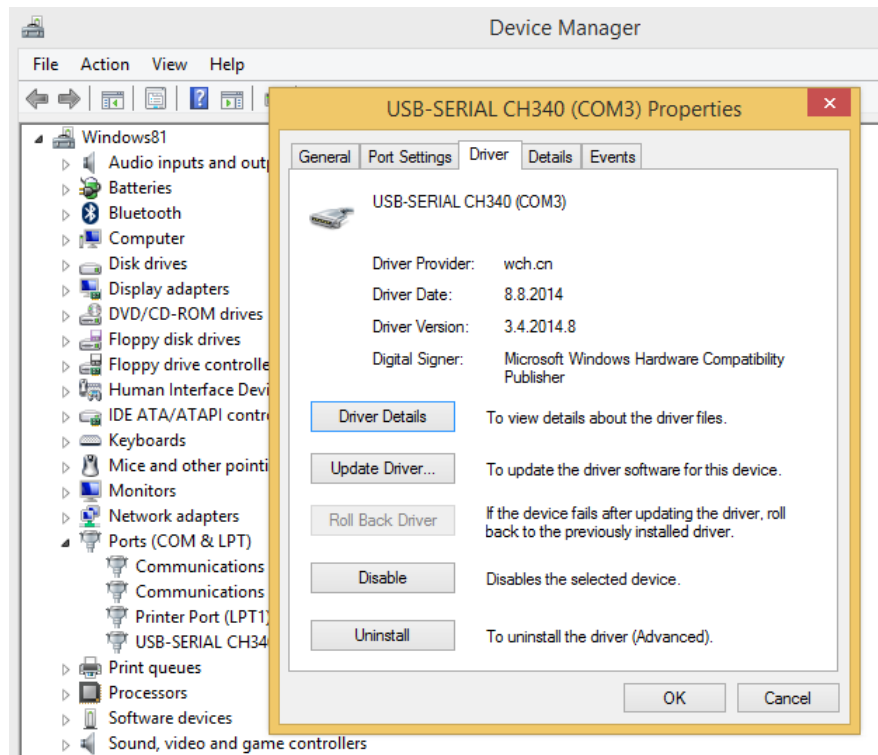
[driver](#)

[Pro Mini](#)

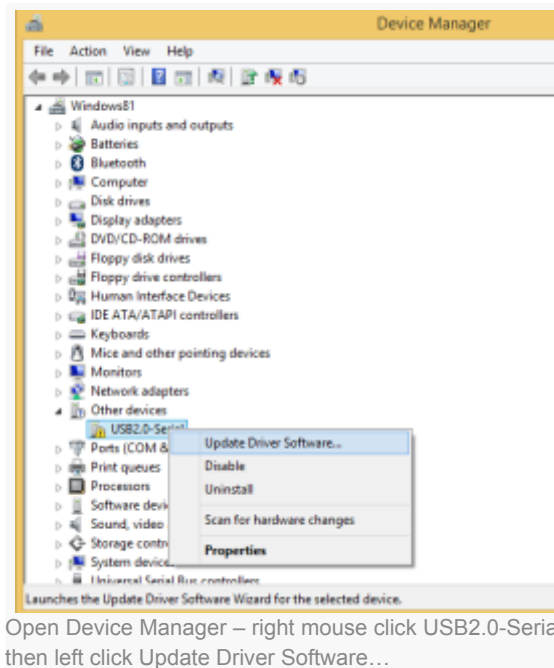
[PWM](#)

CH340, CH340G & CH341 (USB-SERIAL chip) V3.4

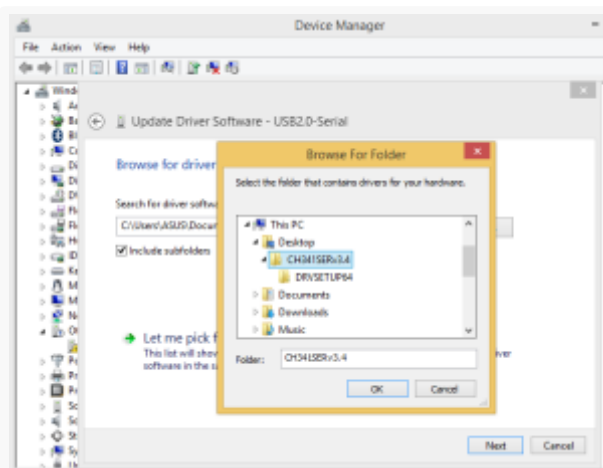
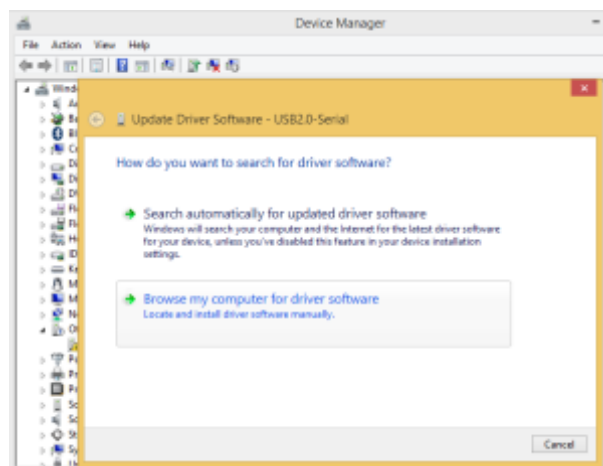
Driver Version = 08/08/2014, 3.4.2014.08



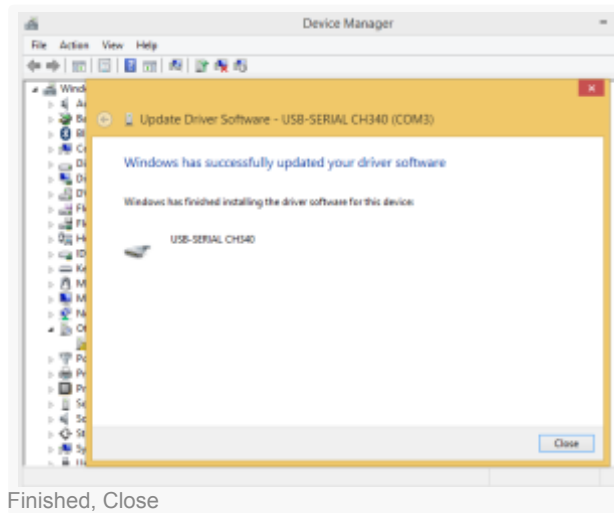
CH340 Windows 8 driver installation



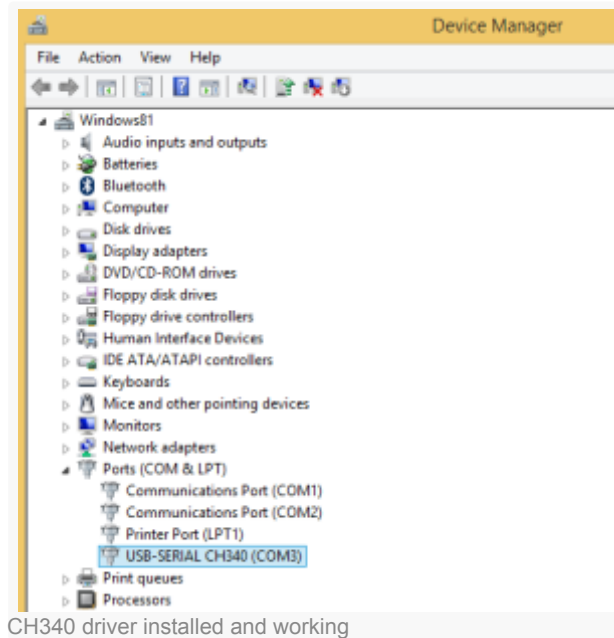
Open Device Manager – right mouse click USB2.0-Serial, then left click Update Driver Software...



open the directory with downloaded & extracted CH341SER.zip driver

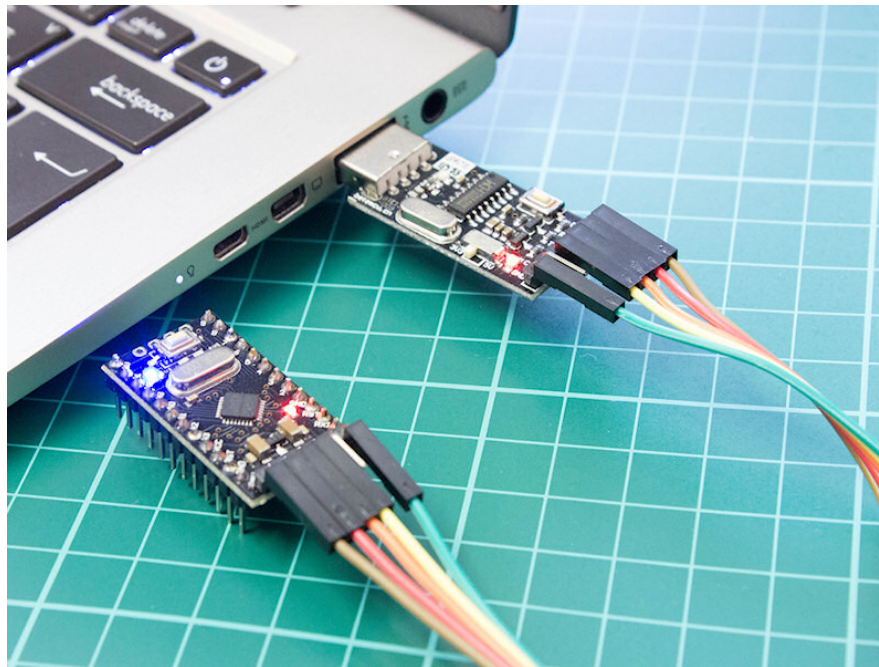
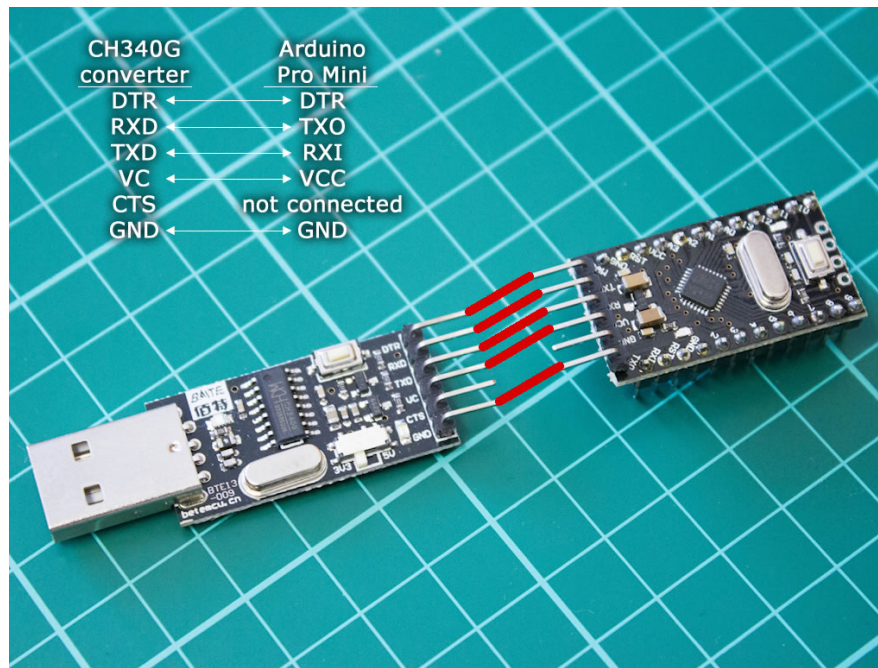


Finished, Close



CH340 driver installed and working

CH340G converter connection and pinout for programming



[Reply](#)



Janevaivan [September 23, 2017 at 3:34 pm](#)

Thank you so much. salamat po...

[Reply](#)



Ahmadul [January 9, 2018 at 6:55 am](#)

I installed it successfully on COM6 port. But Putty does not work. Event log says as follows. Please help...

2018-01-09 15:31:56 Opening serial device COM6

2018-01-09 15:31:56 Configuring baud rate 1000

2018-01-09 15:31:56 Configuring 8 data bits

2018-01-09 15:31:56 Configuring 1 data bits

2018-01-09 15:31:56 Configuring no parity

2018-01-09 15:31:56 Configuring XON/XOFF flow control

[Reply](#)

Leave a Reply

Name *

Email *

Comment

Post Comment

[◀ CH340G converter Windows 7...](#)

[Arduino PWM solar charge... ▶](#)