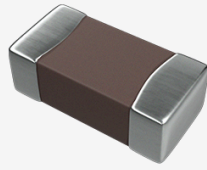


X5R DIELECTRIC CAPACITOR



FEATURES:

X5R DIELECTRIC CAPACITOR IS A KIND OF TEMPERATURE STABLE CAPACITOR WIDELY USED IN INDUSTRY. IT BELONGS TO CLASS II DIELECTRIC MATERIAL AND HAS HIGH DIELECTRIC CONSTANT. THE CHANGE RATE OF CAPACITY VALUE IS WITHIN 15% AND THE AGING RATE IS 3% PER TEN YEARS IN THE RANGE OF OPERATION TEMPERATURE (-55 °C ~ + 85 °C)

RATED VOLTAGE AND CAPACITANCE RANGE

SIZE	6.3V	10V	16V	25V	35V	50V
0201	180pF~1uF	180pF~220nF	180pF~100nF	180pF~100nF	180pF~10nF	180pF~10nF
0402	100pF~10uF	100pF~2.2uF	100pF~2.2uF	100pF~2.2uF	100pF~1uF	100pF~220nF
0603	100pF~22uF	100pF~10uF	100pF~10uF	100pF~10uF	100pF~2.2uF	100pF~1uF
0805	100pF~47uF	100pF~22uF	100pF~22uF	100pF~22uF	100pF~10uF	100pF~4.7uF
1206	100pF~100uF	100pF~47uF	100pF~22uF	100pF~22uF	100pF~10uF	100pF~10uF
1210	220pF~100uF	220pF~47uF	220pF~47uF	220pF~22uF	220pF~10uF	220pF~10uF
1812	470pF~47uF	470pF~47uF	470pF~47uF	470pF~22uF	470pF~4.7uF	470pF~4.7uF
2220	220pF~47uF	220pF~47uF	220pF~47uF	220pF~47uF	220pF~10uF	220pF~10uF

MAIN PERFORMANCE CHARACTERISTICS

Capacitance Range	100pF~100uF
Capacitance Tolerance	Usually ±10%, ±20%
Operating Temperature Range	-55°C~+85°C
Temperature Coefficient	Within ± 15%
Rated Voltage	6.3V/10V/16V/25V/35V/50V
Dissipation Factor	Refer to the X5R dissipation standard worksheet
Insulation Resistance	Choose the smaller value if over 10GΩ or 100Ω.F
Withstanding Voltage	$U_r \leq 50V$; $2.5 * U_r$ (Rated Voltage)
Testing Voltage	10μF, 1 ± 0.2Vrms >10μF, 0.5 ± 0.1Vrms
Testing Frequency	10μF, 1Khz ± 10% >10μF, 120 ± 24Hz

X5R DISSIPATION STANDARD WORKSHEET

SIZE	U_r	CAPACITANCE RANGE	DF
0201	/	$C \leq 0.01\mu F$	$\leq 7\%$
		$C > 0.01\mu F$	$\leq 10\%$
0402	/	$C \leq 0.1\mu F$	$\leq 7\%$
		$C > 0.1\mu F$	$\leq 10\%$
0603	$\leq 25V$	$C \leq 0.47\mu F$	$\leq 7\%$
		$C > 0.47\mu F$	$\leq 10\%$
	$> 25V$	$C \leq 0.1\mu F$	$\leq 5\%$
		$0.1\mu F < C \leq 0.22\mu F$	$\leq 7\%$
		$C > 0.22\mu F$	$\leq 10\%$
		$C < 1\mu F$	$< 7\%$

0805	≤25V	C > 1μF	≤10%
		C ≤ 0.47μF	≤7%
	>25V	C > 0.47μF	≤10%
		C < 2.2μF	≤7%
1206	≤25V	2.2μF ≤ C ≤ 47μF	≤10%
		C < 1μF	≤7%
	>25V	1μF ≤ C ≤ 47μF	≤10%
1210	/	C < 2.2μF	≤7%
		2.2μF ≤ C ≤ 47μF	≤10%
1812	/	C < 2.2μF	≤7%
		2.2μF ≤ C ≤ 47μF	≤10%
2225	/	C < 2.2μF	≤7%
		2.2μF ≤ C ≤ 47μF	≤10%

Products

Ceramic appearance parts
 Components
 Optical communication
 New energy
 Package
 Module
 Electronic materials

Quality Service

Quality Policy
 Manufacturing Capacity
 R&D

Contact Us

ADD: Sanhuan Industrial District, Fengtang,
 Chaozhou, Guangdong, China
 TEL: (86) - 0768-2360888
 FAX: (86) - 0768-6855921 6855928
 E-mail: info@cctc.cc

