

**SMB****系列射频同轴连接器**  
SERIES SMB RF COAXIAL CONNECTORS

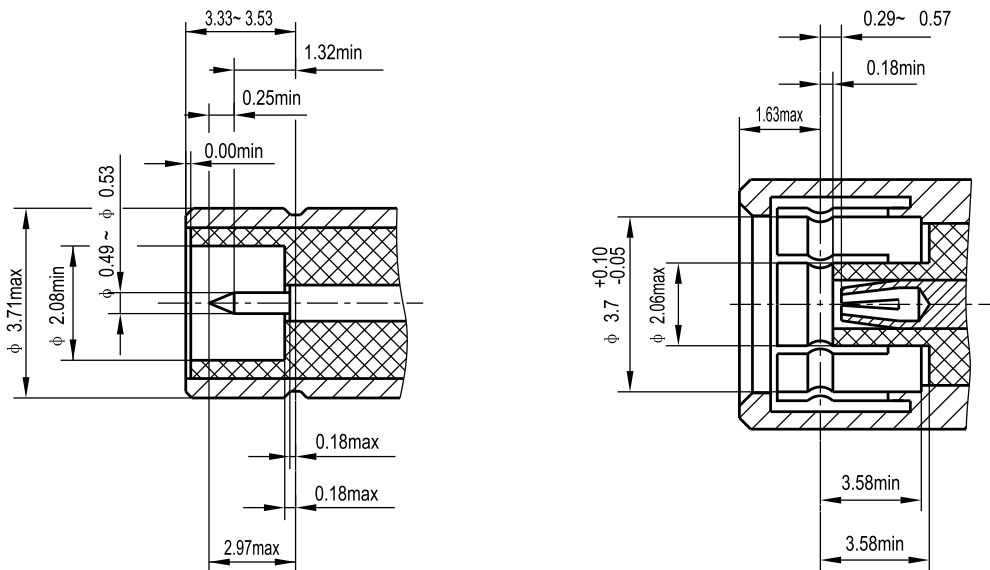
该系列产品是按MIL-C-39012详细规范研制生产的一种小型推入式射频同轴连接器。它具有体积小、重量轻，使用方便，电性能优良等特点，适用于无线电设备和电子仪器的高频回路中连接射频同轴电缆。

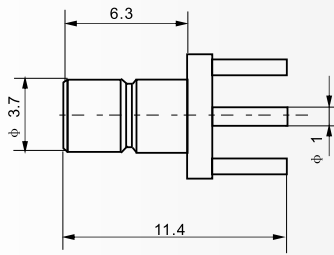
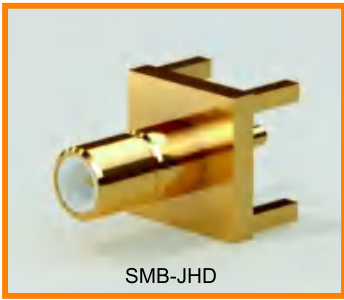
Series SMB R F Coaxial connectors developed according to the specification MIL-C-39012, with shap-on coupling mechanism, have the advantages of light, small, easy mating and super electrical performances, etl. The product are suitable to connect the R F coaxial cable of high frequency circuit in radio equipment and electrical instrument.



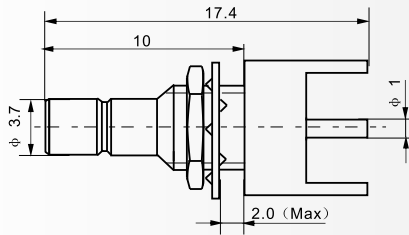
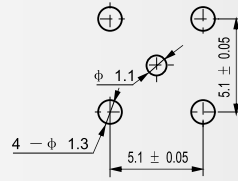
主要技术特性		KEY PERFORMANCE		
温度范围 Temperature range		-65 ~ +165℃	绝缘电阻 Insulation resistance	≥1000MΩ
特性阻抗 Characteristic Impedance		50 Ω	介质耐压 Dielectric Withstanding voltage	750V(rms)
频率范围 Frequency range		0 ~ 4GHz	工作电压 Voltage rating	250V(rms)
接触电阻 Contact resistance	中心导体 Center conductor	≤0.006 Ω	寿命 Durability	500 Cycles
	外导体 Outer conductor	≤0.001 Ω	电压驻波比 VSWR	≤1.34

头部配合尺寸      INTERFACE MATING DIMENSIONS

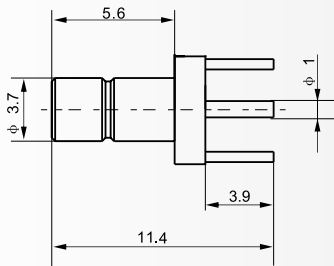
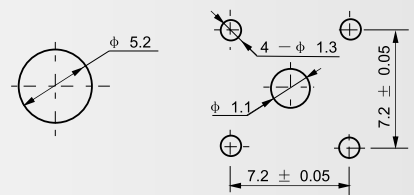




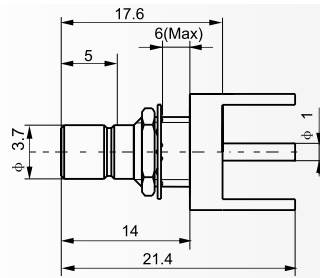
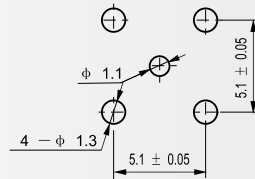
建议安装开孔尺寸



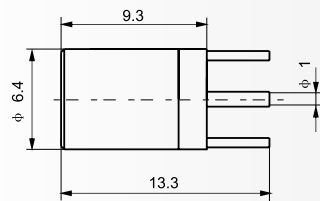
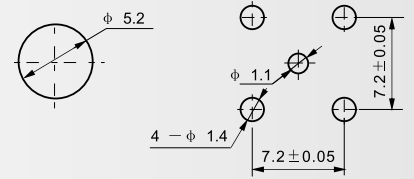
建议安装开孔尺寸



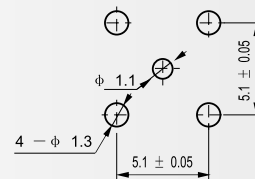
建议安装开孔尺寸



建议安装开孔尺寸

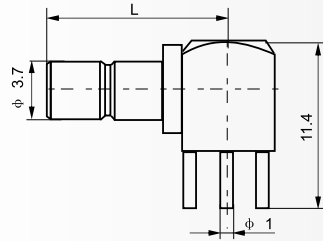


建议安装开孔尺寸

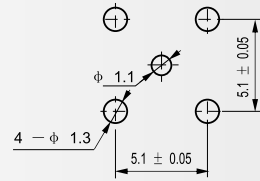


# SMB

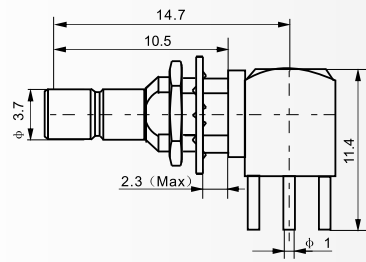
系列射频同轴连接器  
SERIES SMB COAXIAL CONNECTORS



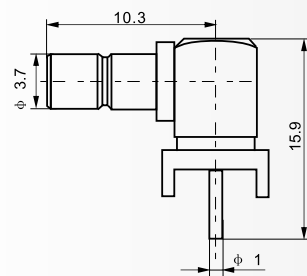
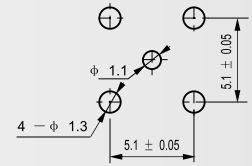
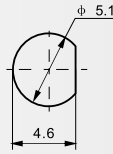
建议安装开孔尺寸



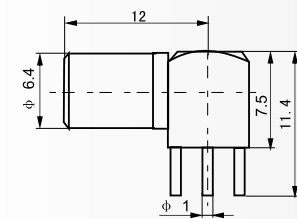
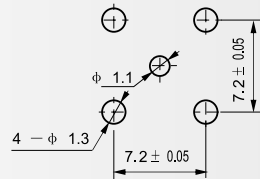
Type	L
SMB-JWHD	12.3
SMB-JWHD1	10.3
SMB-JWHD3	10.3
SMB-JWHD4	12.3



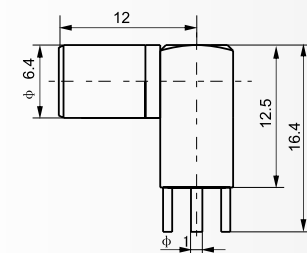
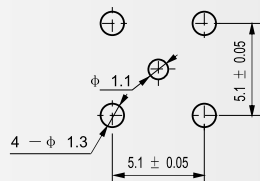
建议安装开孔尺寸



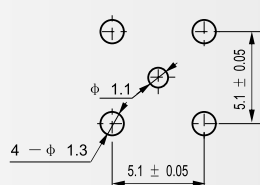
建议安装开孔尺寸



建议安装开孔尺寸

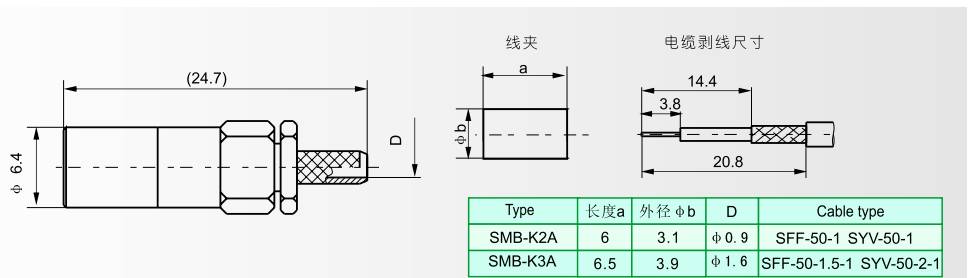
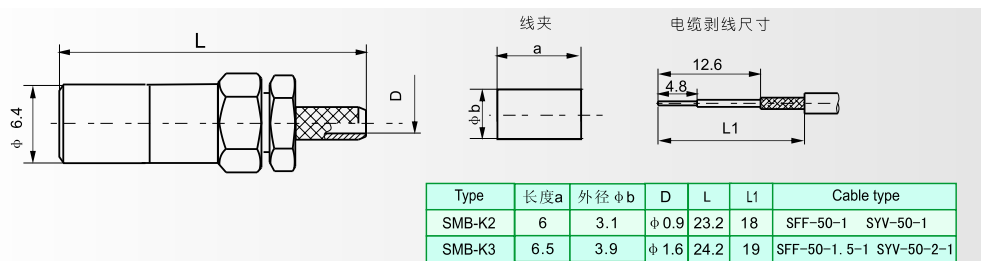
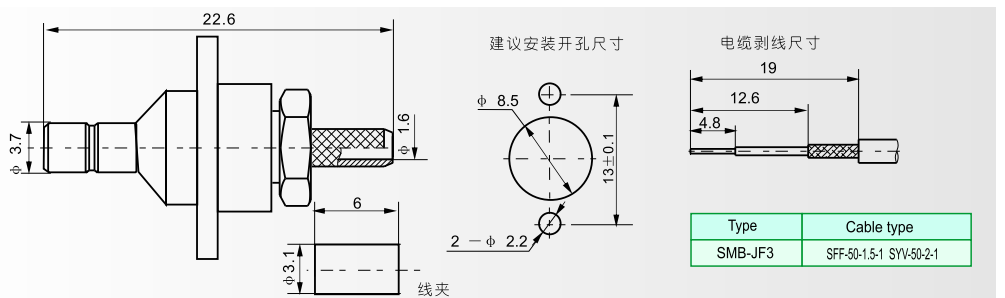
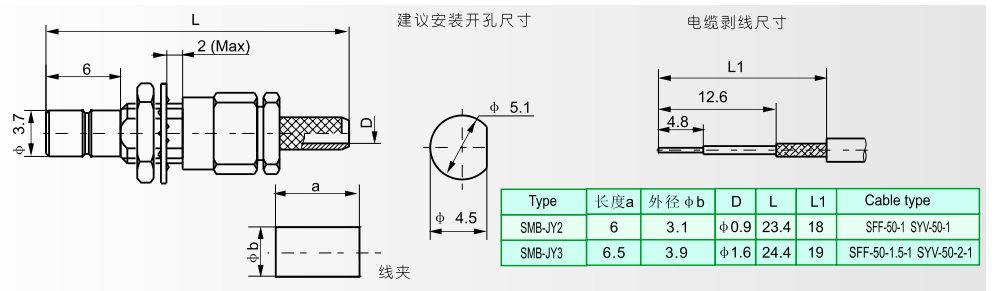
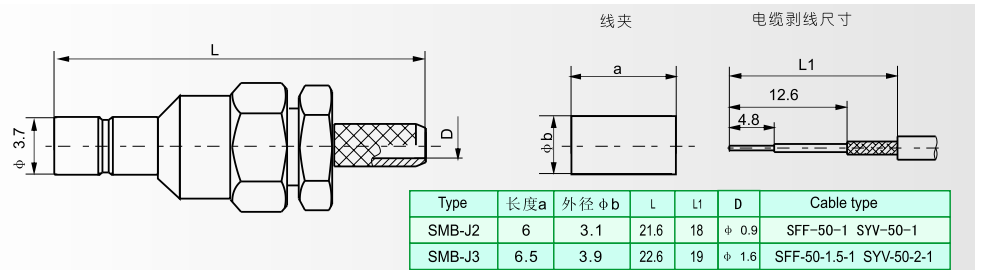


建议安装开孔尺寸



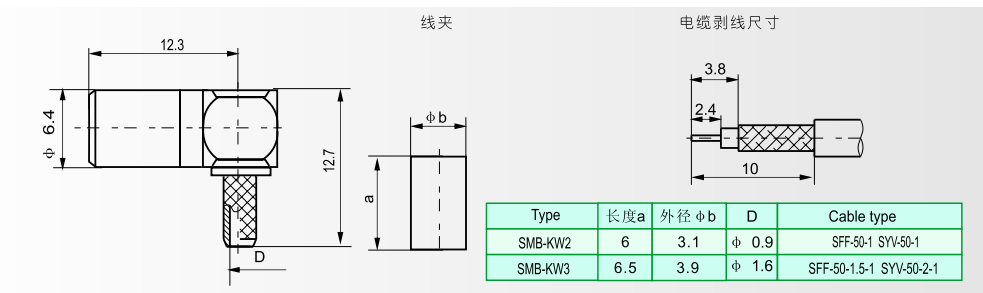
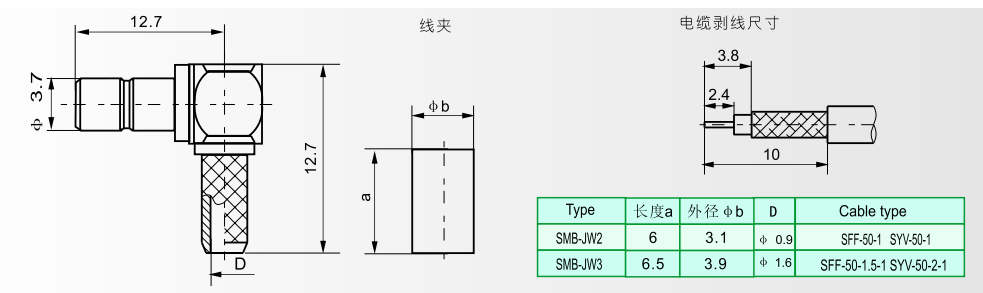
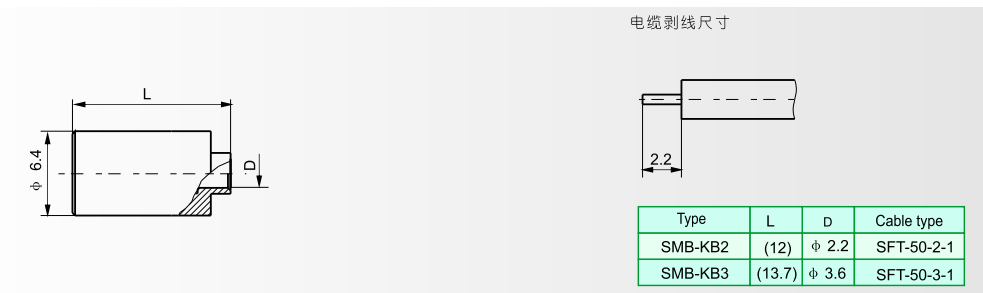
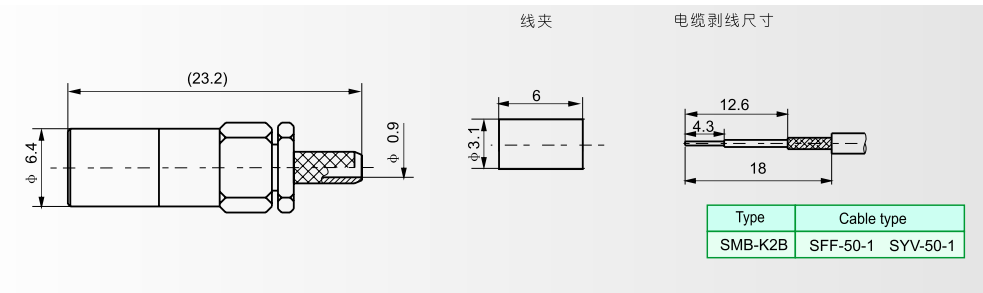
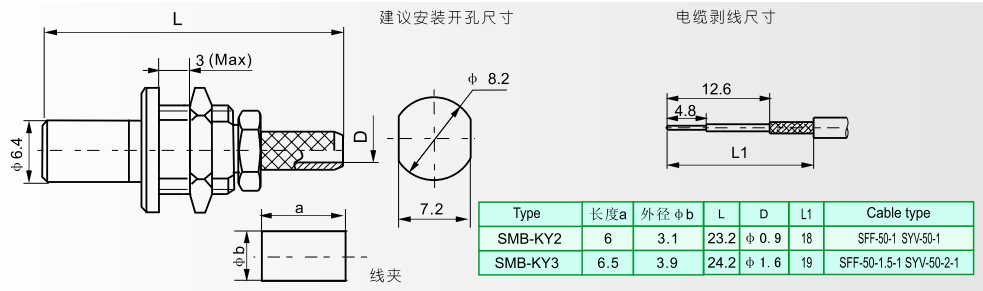
# SMB

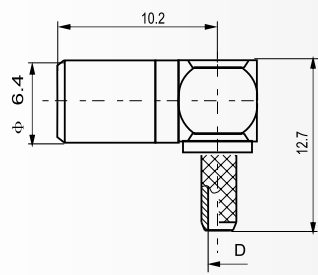
系列射频同轴连接器  
SERIES SMB COAXIAL CONNECTORS



# SMB

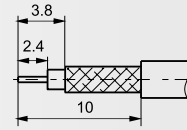
系列射频同轴连接器  
SERIES SMB COAXIAL CONNECTORS



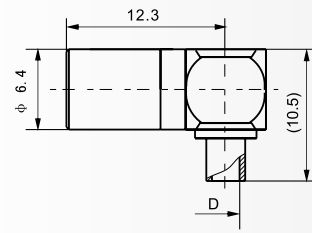


线夹

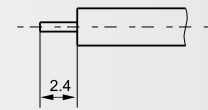
电缆剥线尺寸



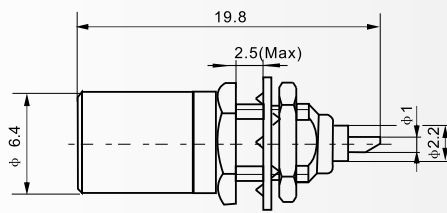
Type	长度a	外径 $\phi b$	D	Cable type
SMB-KW2A	6	3.1	$\phi 0.9$	SFF-50-1 SYV-50-1
SMB-KW3A	6.5	3.9	$\phi 1.6$	SFF-50-1.5-1 SYV-50-2-1



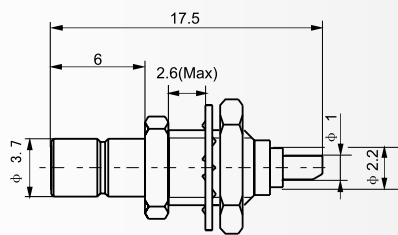
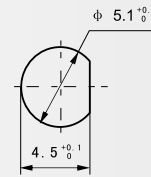
电缆剥线尺寸



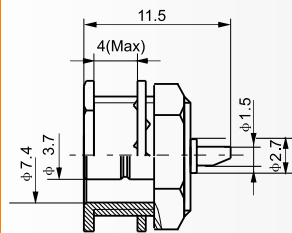
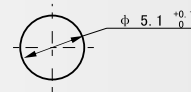
Type	D	Cable type
SMB-KWB1	$\phi 1.2$	SFT-50-1
SMB-KWB2	$\phi 2.2$	SFT-50-2-1
SMB-KWB3	$\phi 3.6$	SFT-50-3-1



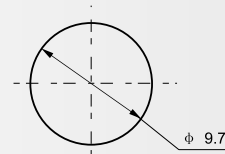
建议安装开孔尺寸



建议安装开孔尺寸

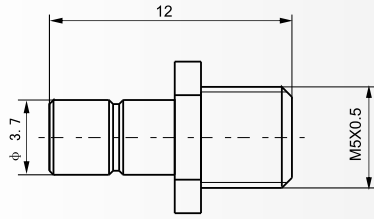


建议安装开孔尺寸

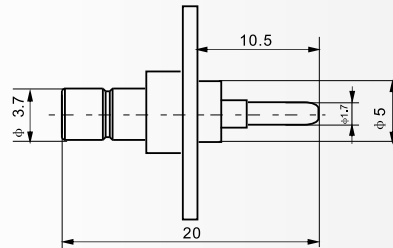




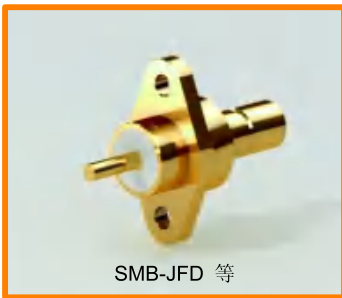
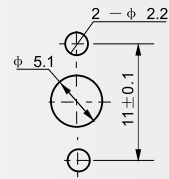
SMB-JYD



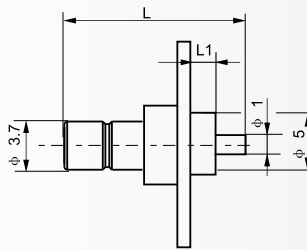
SMB-JFD3



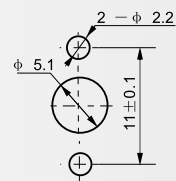
建议安装开孔尺寸



SMB-JFD 等



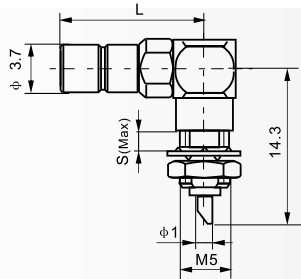
建议安装开孔尺寸



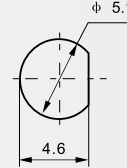
Type	L	L1
SMB-JFD	13.3	2
SMB-JFD1	17.5	2.4
SMB-JFD6	14.3	2.8
SMB-JFD7	15.3	2



SMB-JWY 等



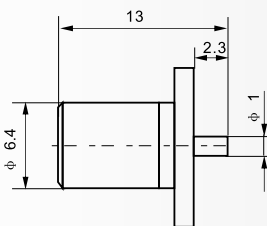
建议安装开孔尺寸



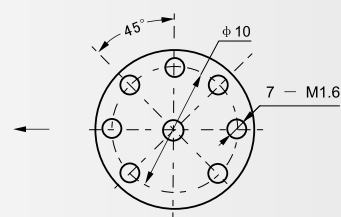
Type	L	S
SMB-JWY	11.5	2.7
SMB-JWY-1	11.7	1.4



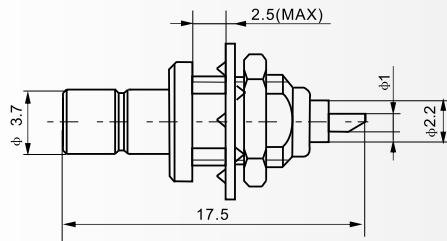
SMB-KFD



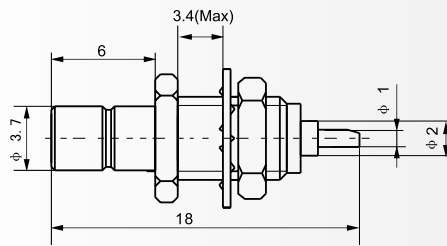
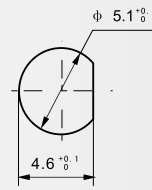
建议安装开孔尺寸



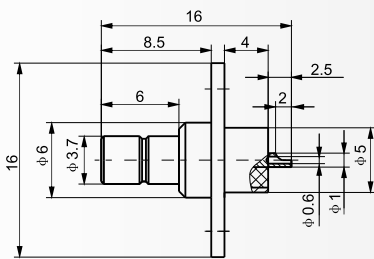
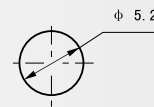




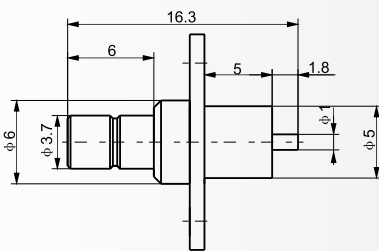
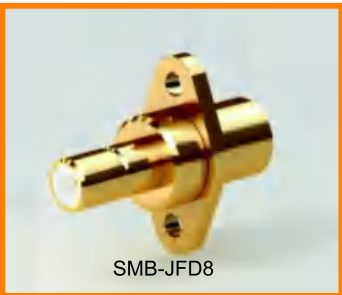
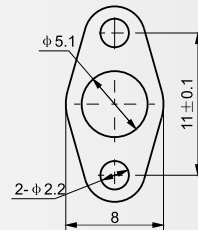
建议安装开孔尺寸



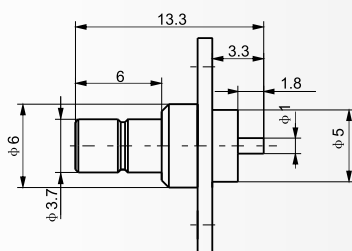
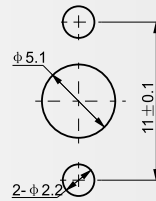
建议安装开孔尺寸



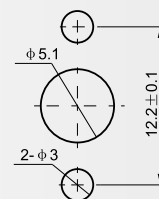
法兰盘尺寸

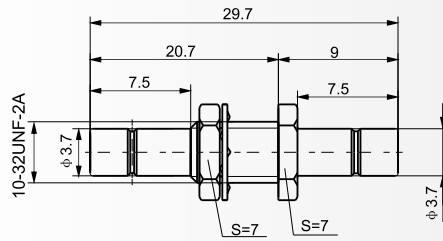


建议安装开孔尺寸

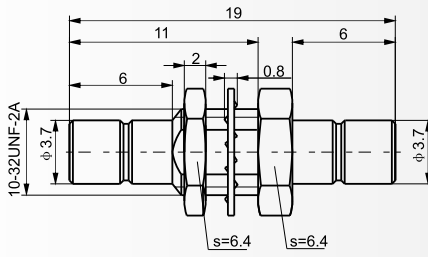
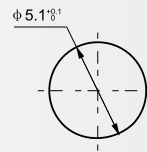


建议安装开孔尺寸

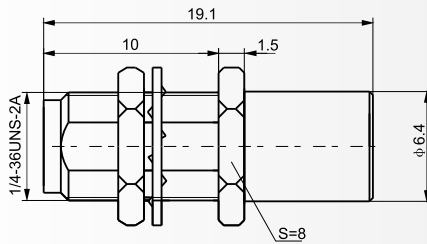
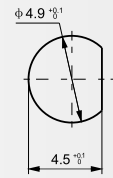




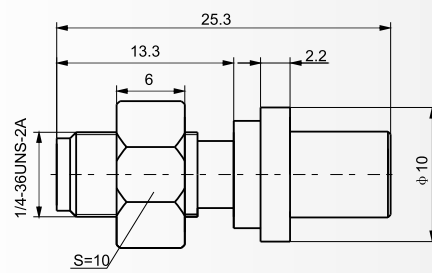
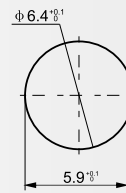
建议安装开孔尺寸



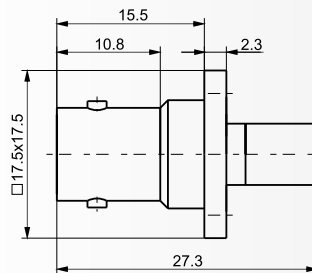
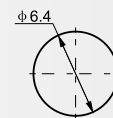
建议安装开孔尺寸



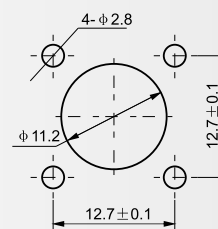
建议安装开孔尺寸



建议安装开孔尺寸

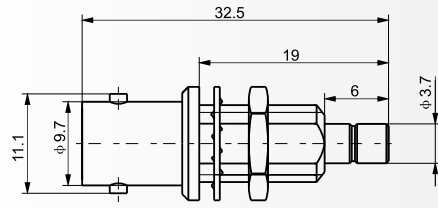


建议安装开孔尺寸

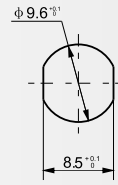




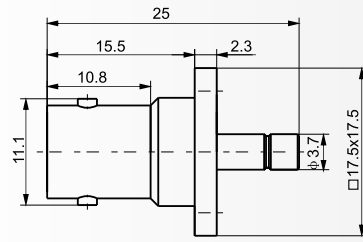
BNC/SMB-KJY



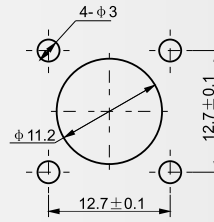
建议安装开孔尺寸



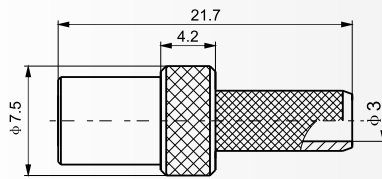
BNC/SMB-50KFJ



建议安装开孔尺寸



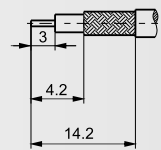
SMB-K195



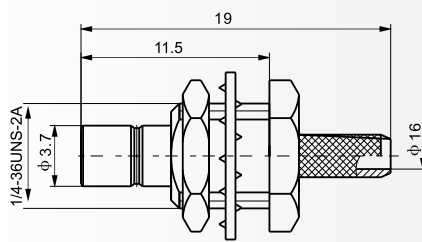
线夹



配接电缆: LMR195  
电缆剥线尺寸

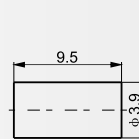


SMB-JY316

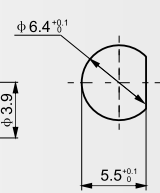


配接电缆RG316

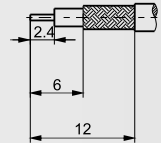
线夹



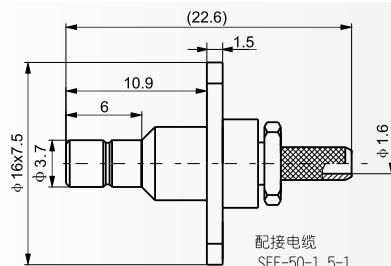
建议安装开孔尺寸



电缆剥线尺寸

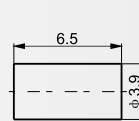


SMB-JF3-1

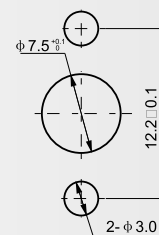


配接电缆  
SFF-50-1.5-1

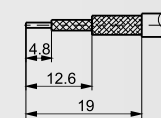
线夹



建议安装开孔尺寸



电缆剥线尺寸

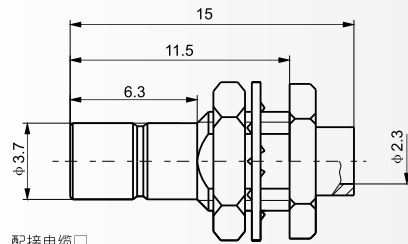


# SMB

系列射频同轴连接器  
SERIES SMB COAXIAL CONNECTORS

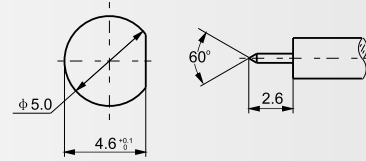


SMB-JYB2

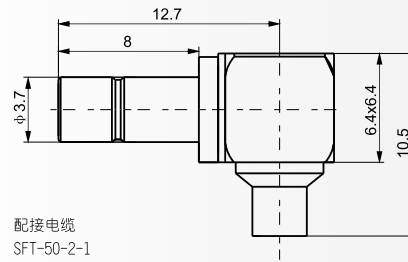


配接电缆  
SFT-50-2-1

建议安装开孔尺寸 电缆剥线尺寸

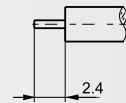


SMB-JWB2

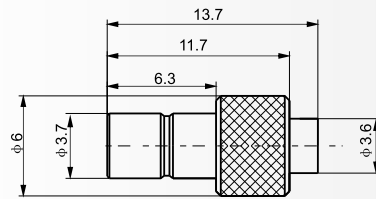


配接电缆  
SFT-50-2-1

电缆剥线尺寸

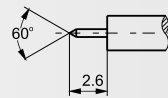


SMB-JB2G

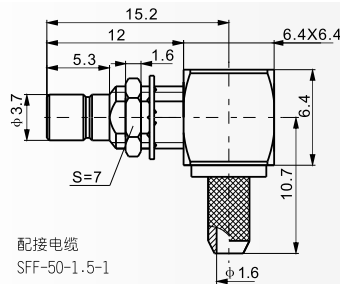


配接电缆  
SFT-50-2-1

电缆剥线尺寸

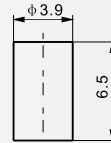


SMB-JWY3

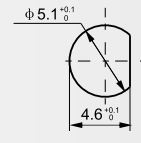


配接电缆  
SFF-50-1.5-1

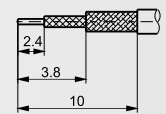
线夹



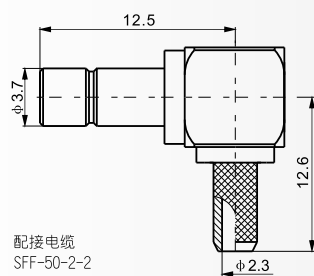
建议安装开孔尺寸



电缆剥线尺寸

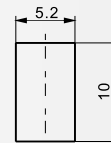


SMB-JW4

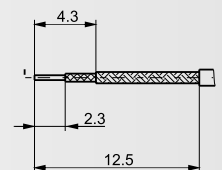


配接电缆  
SFF-50-2-2

线夹

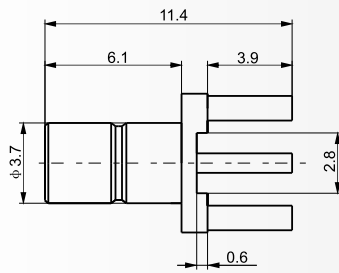


电缆剥线尺寸

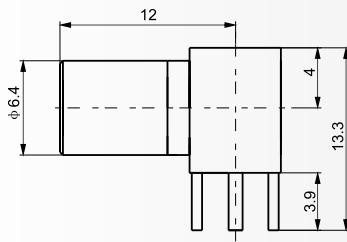
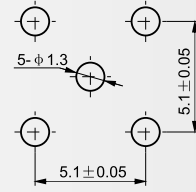


# SMB

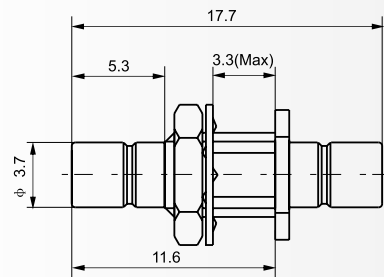
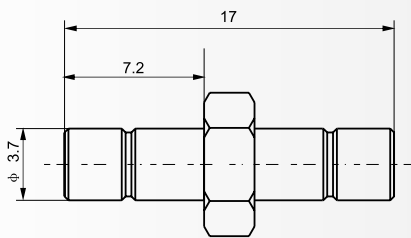
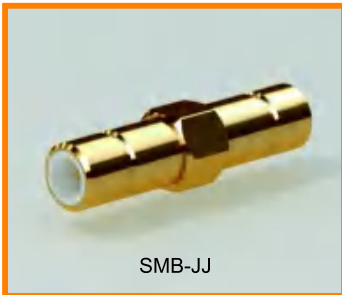
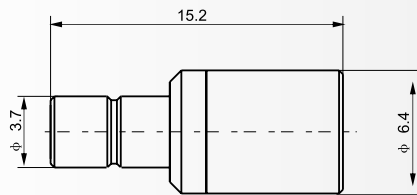
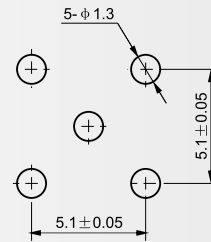
系列射频同轴连接器  
SERIES SMB COAXIAL CONNECTORS



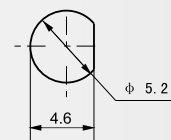
建议安装开孔尺寸

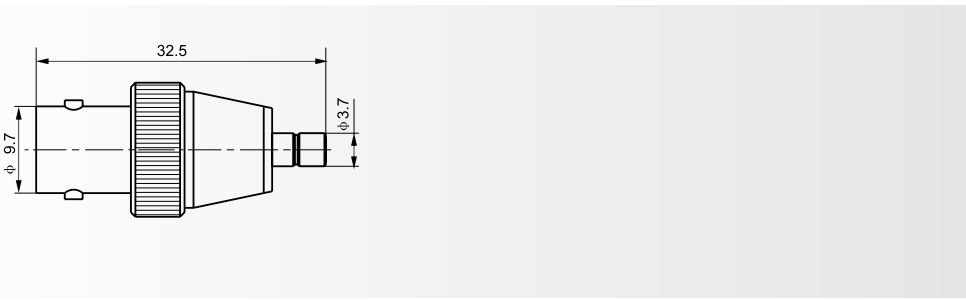
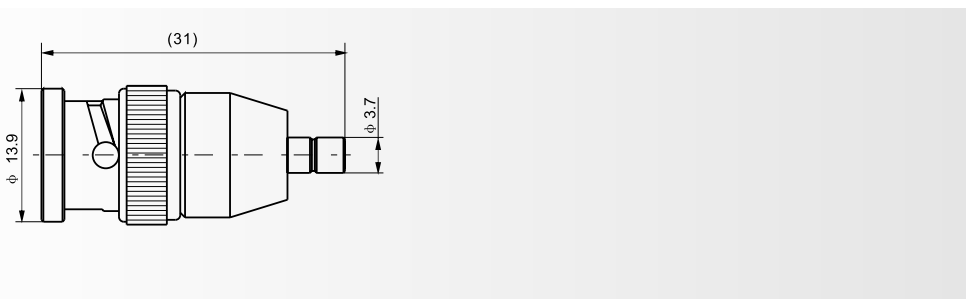
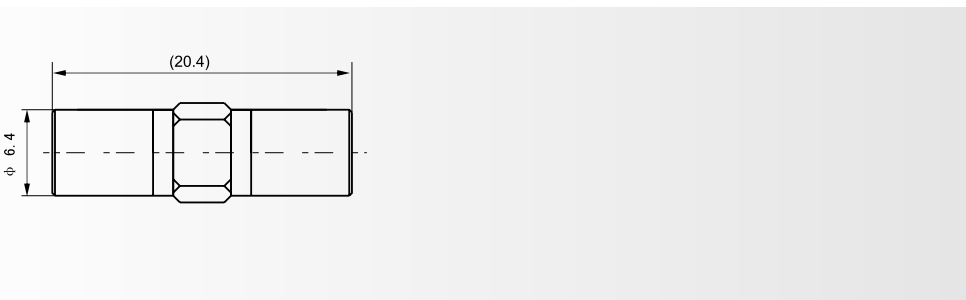
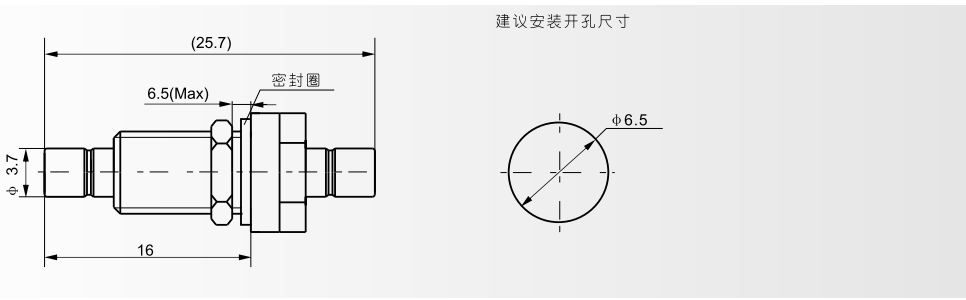
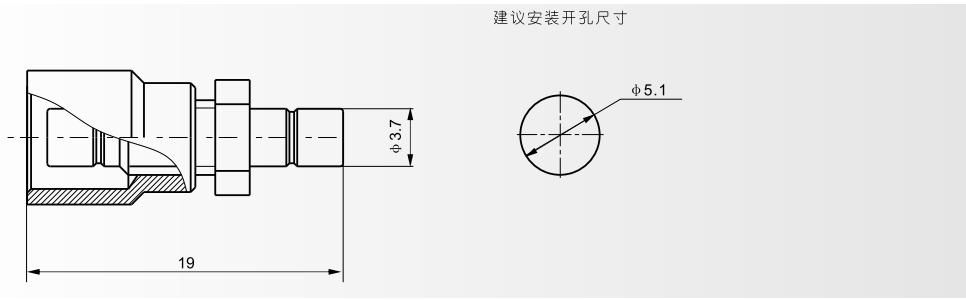


建议安装开孔尺寸



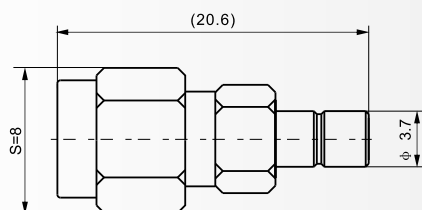
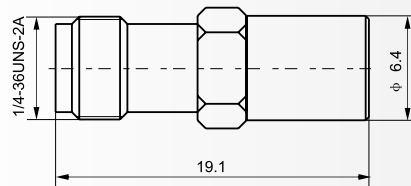
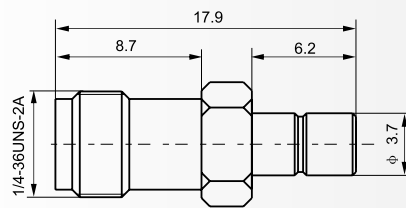
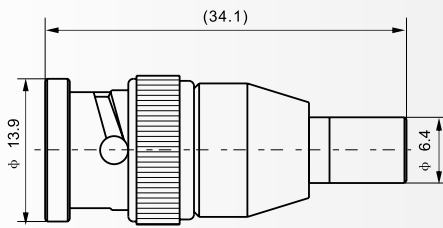
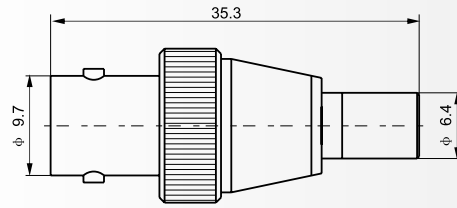
建议安装开孔尺寸





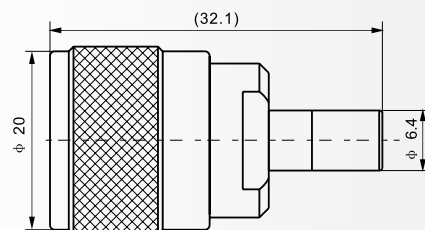
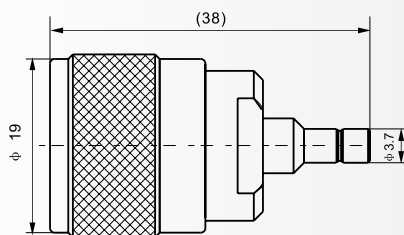
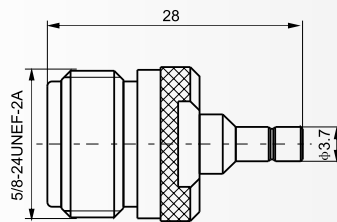
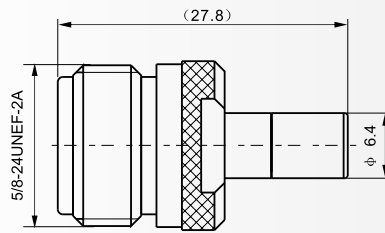
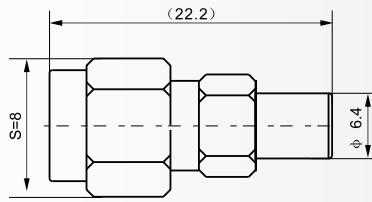
# SMB

系列射频同轴连接器  
SERIES SMB COAXIAL CONNECTORS



# SMB

系列射频同轴连接器  
SERIES SMB COAXIAL CONNECTORS



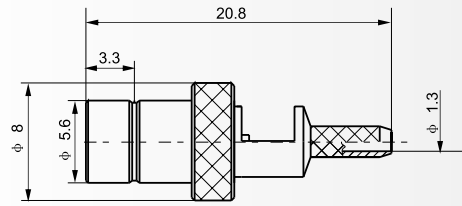


# SMB

系列射频同轴连接器  
SERIES SMB COAXIAL CONNECTORS

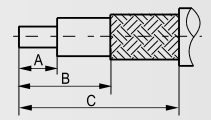
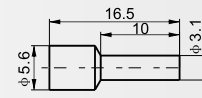


SMB-75J2.5A



线夹

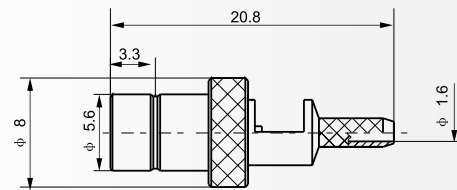
电缆剥线尺寸



Type	A	B	C	Cable type
SMB-75J2.5A	2	4.4	9	SFYFZ-75-2 ※ 8

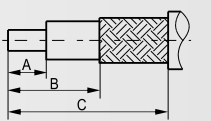


SMB-75J3A



线夹

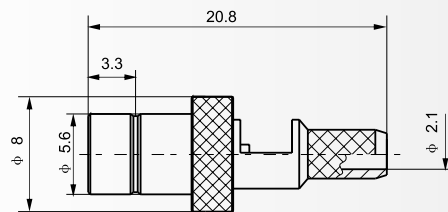
电缆剥线尺寸



Type	A	B	C	Cable type
SMB-75J3A	2	4.4	9	SFYZ-75-2-1

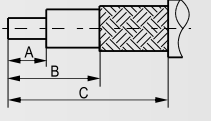
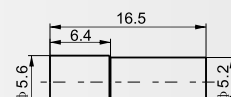


SMB-75J4



线夹

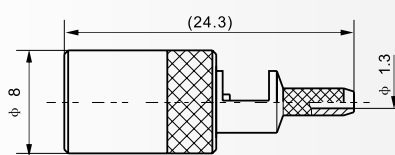
电缆剥线尺寸



Type	A	B	C	Cable type
SMB-75J4	2	4.4	9	SYV-75-2-1

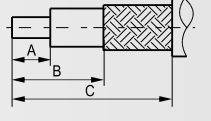
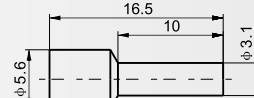


SMB-75K2.5A



线夹

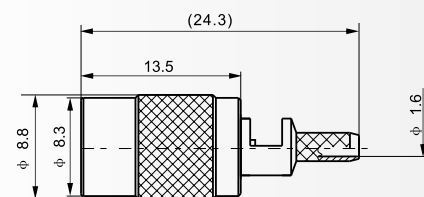
电缆剥线尺寸



Type	A	B	C	Cable type
SMB-75K2.5A	2	4.4	9	SFYFZ-75-2 ※ 8

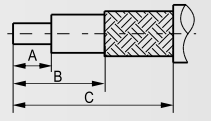
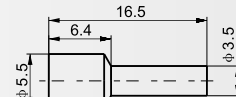


SMB-75K2.5E



线夹

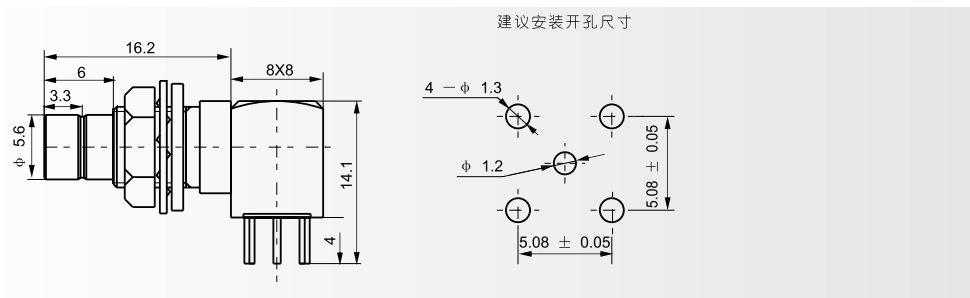
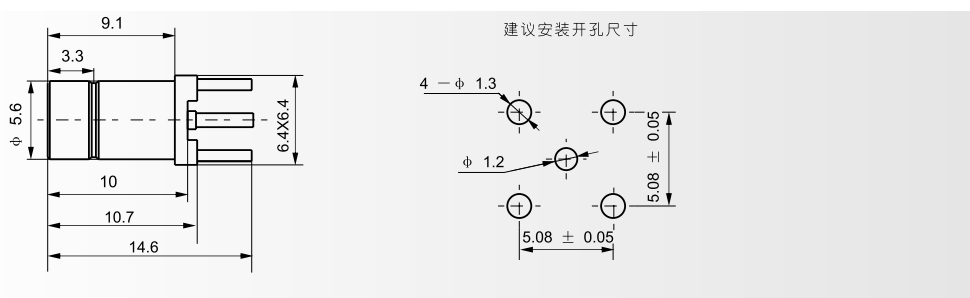
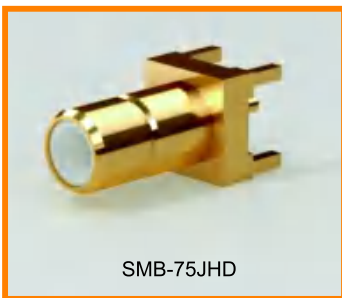
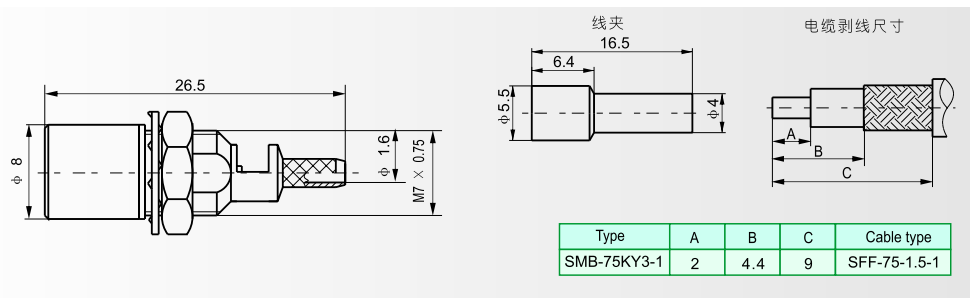
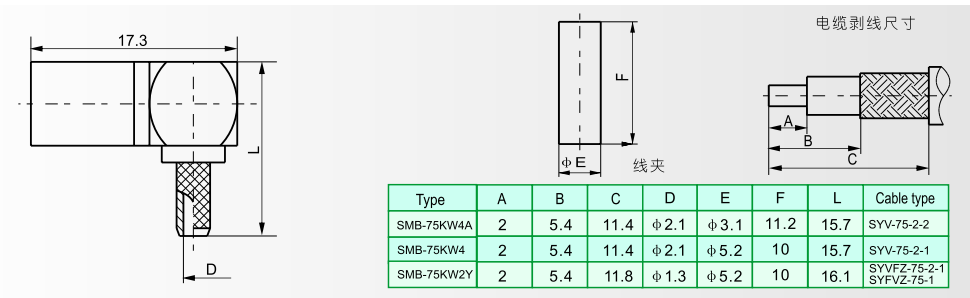
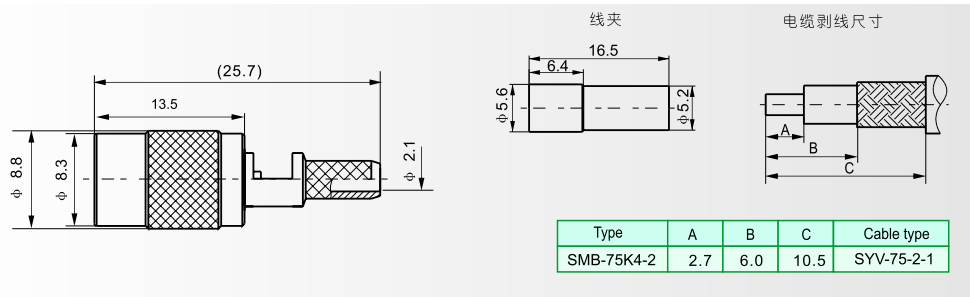
电缆剥线尺寸

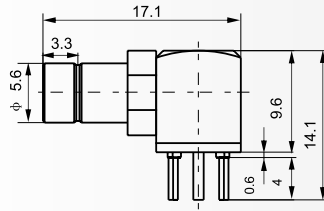


Type	A	B	C	Cable type
SMB-75K2.5-E	2.7	4.8	9.3	SFYZ-75-2-1

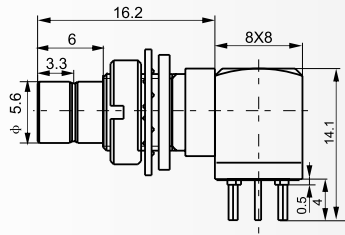
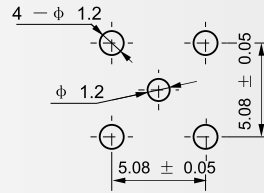
# SMB

系列射频同轴连接器  
SERIES SMB COAXIAL CONNECTORS

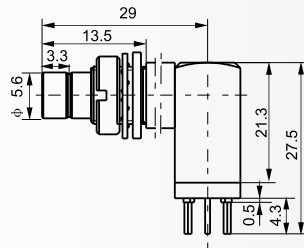
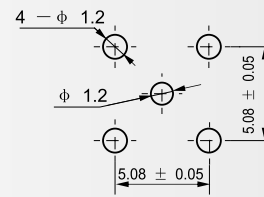




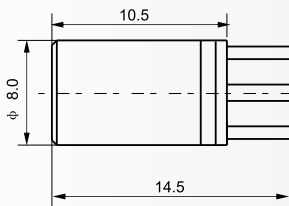
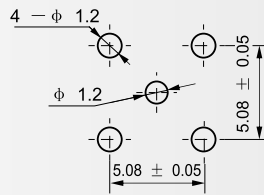
建议安装开孔尺寸



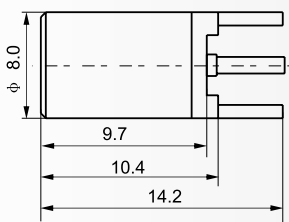
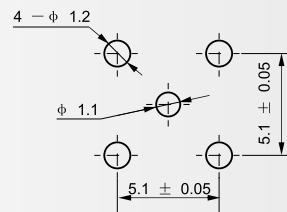
建议安装开孔尺寸



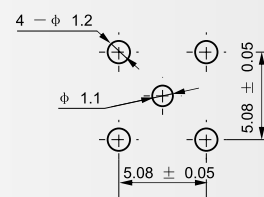
建议安装开孔尺寸



建议安装开孔尺寸



建议安装开孔尺寸

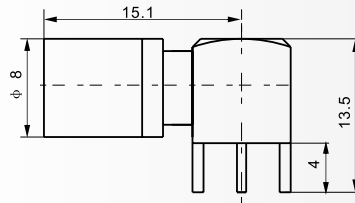


**SMB**

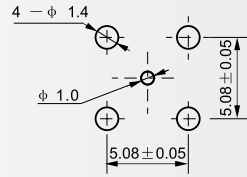
系列射频同轴连接器  
SERIES SMB COAXIAL CONNECTORS



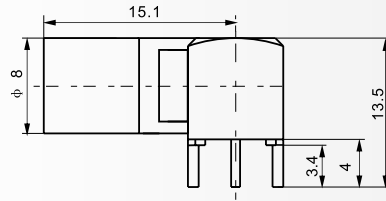
SMB-75KWHD2



建议安装开孔尺寸



SMB-75KWHD5



建议安装开孔尺寸

